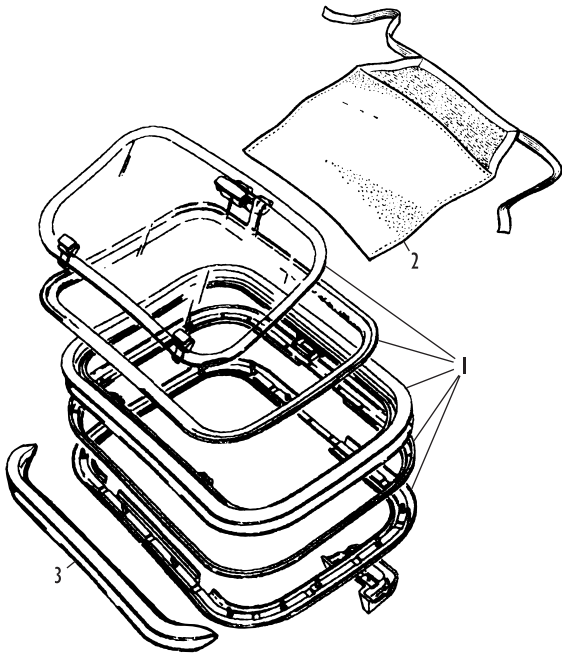
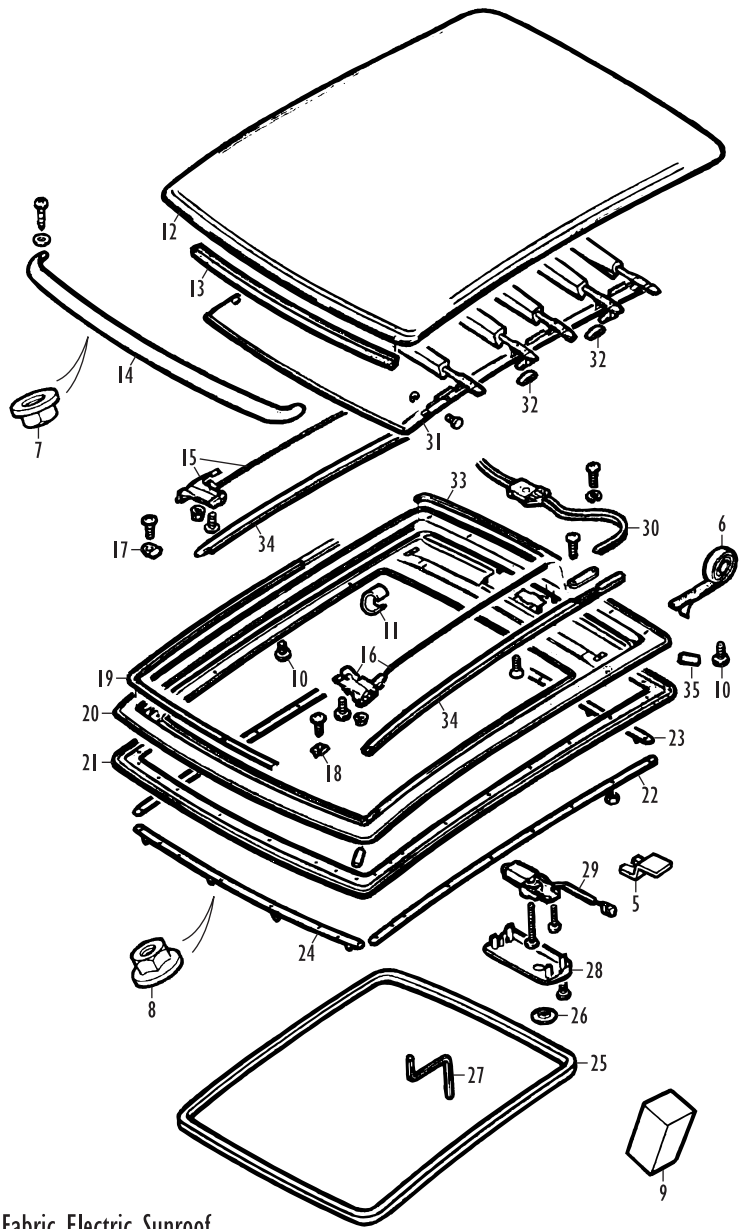


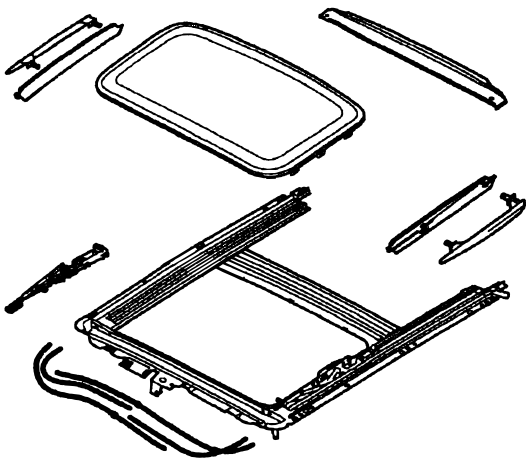
Sunroof Assemblies - Saloons; Tilt Assembly - Pick Up



Glass Manual Tilt and Remove Sunroof

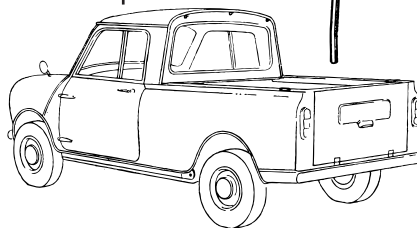
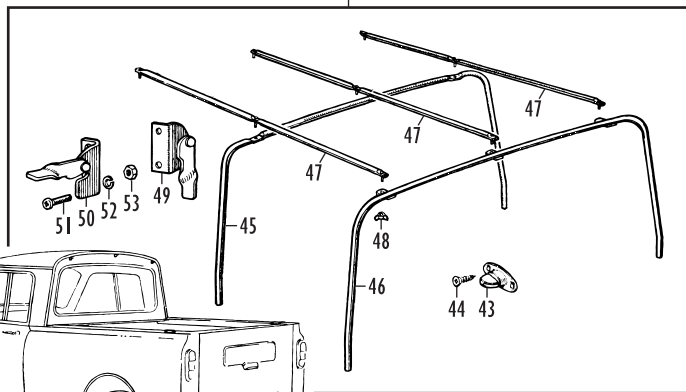
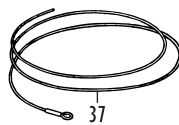
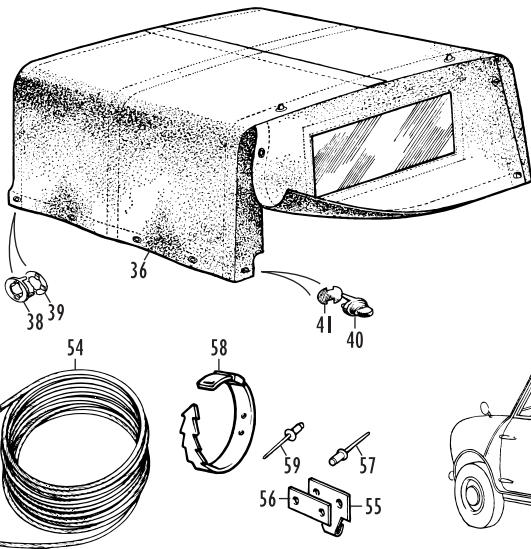


Fabric Electric Sunroof



Glass Electric Tilt and Slide Sunroof

4



Pick Up Tilt

Sunroof Assemblies - Saloons; Tilt Assembly - Pick Up

No.	Part No.	Description	Qty.	Remarks
-----	----------	-------------	------	---------

Sunroof Assemblies

Officially only the three sunroof assemblies shown here were offered on the Mini, although dealerships and accessory shops often fitted other types in their own workshops. Usually these were of the manually operated fabric type (the best known of which was the Webasto) in the 1960s and 1970s and the glass tilting type (often the dealer fitted ones were of Britax manufacture) from the 1980s onwards.

At considerable cost, specialist automotive trimmers can repair or restore an old manual fabric sunroof, but parts are generally not available. If you have a damaged glass tilting sunroof, replacement with a complete new assembly is usually the only option (and keep your fingers crossed the new one's the same size), unless you're really lucky and a windscreen fitting company happens to have the right glass.

Glass Manual Tilt And Remove Sunroof

Cooper SE (Rover Special Products);

Dealer Fitted Accessory For All Saloon Models 1989-96.

1	EED10065	SUNROOF ASSEMBLY, glass, tilt and remove	1	
2	GLZ382A	BAG, tilt and remove glass stowage	1	
3	GLZ381A	WIND DEFLECTOR ASSEMBLY	1	

Glass Electric Tilt And Slide Sunroof

Dealer Fitted Accessory For All Saloon Models 1997 On

4	EED101160	SUNROOF ASSEMBLY, glass, electric	1	
---	-----------	-----------------------------------	---	--

Fabric Electric Sunroof

British Open Classic 1992;

Factory Fitted Or Dealer Fitted Option For All Saloon Models 1992 on

First seen as a very popular option on Japan-bound Minis at the start of the 1990s, the fabric electric sunroof came to the attention of the UK and mainland European public on one of the more desirable Mini limited editions, the British Open Classic of 1992. Soon, a very healthy proportion of Minis rolling down the production line were fitted with this sunroof; vehicles so equipped were always designated within the factory as 'British Opens' whether they were part of the limited edition run or not, and many up until the introduction of the winged Mini bonnet badge in 1997 received the green and gold shield shaped bonnet badge that was supposed to be the preserve of the limited edition.

There never was a roof panel created specifically for the fabric electric sunroof. In the same way as bodies were modified after assembly for the later Sports Pack 13" wheels and wheel arch extensions, 'British Open' roof panels were diverted before the start of the production line to a plasma cutting booth where the rather large hole for the sunroof was created. To enable the sunroof to be retro-fitted to Minis at dealerships or in bodyshops, a cutting and drilling template has been made available.

	VUY100010	SUNROOF ASSEMBLY KIT, fabric, electric	1	Dealer fitted option, 1997 on.
	EHS100010	TEMPLATE AND INSTRUCTIONS, sunroof	1	To cut sunroof aperture in roof.
5	EDZ10001	BRACKET, sunroof mounting	8	
	EFN10001	CAP, spacer block, wind deflector	2	
6	ENN10003	FOAM TAPE, self adhesive	A/R	
	EYB10008	PLUG, wind deflector blanking	1	
	EYC10072	CLIP, sunroof	2	
7	AFU4124	NUT, wind deflector	6	
8	FN106047	NUT, sunroof attachment	32	
9	JKL10001	PAD, support, demister duct	6	
10	SE104165	SCREW, sunroof attachment	5	
11	WYC10009	CLIP, tubular, sunroof	2	
	EED10072PMA	SUNROOF ASSEMBLY, fabric, black	1	1992-96.
	EED101110PMA	SUNROOF ASSEMBLY, fabric, black	1	1997 on.

The following parts are included in a sunroof assembly:

12	EGB100020	LID ASSEMBLY, sunroof	1	1992-96.
	EGB100080	LID ASSEMBLY, sunroof	1	1997 on.
13	EEQ100150	SEAL, sunroof frame, front	1	1992-96.
	EEQ100280	SEAL, sunroof frame, front	1	1997 on.
14	EFJ10007PMA	DEFLECTOR ASSEMBLY, wind	1	
15	EXM100160	GUIDE ASSEMBLY, sunroof, front RH	1	1992-96.
	EXM100300	GUIDE ASSEMBLY, sunroof, front RH	1	1997 on.
16	EXM100170	GUIDE ASSEMBLY, sunroof, front LH	1	1992-96.
	EXM100310	GUIDE ASSEMBLY, sunroof, front LH	1	1997 on.
17	EFY100060	COVER, sunroof guide rail, RH	1	
18	EFY100070	COVER, sunroof guide rail, LH	1	
19	EEK100030	BLOCK, headlining spacer, inner	1	1992-96.
20	EGD100110	TRAY ASSEMBLY, sunroof	1	1992-96.
	EGD100150	TRAY ASSEMBLY, sunroof	1	1997 on.
21	EEK100040	SEAL, sunroof frame, surround	1	1992-96.
	EEQ100290	SEAL, sunroof frame, surround	1	1997 on.
22	EDD10011	REINFORCEMENT, roof trim, side	2	
23	EDD10012	REINFORCEMENT, roof trim, rear	1	
24	EDD100130	REINFORCEMENT, roof trim, front	1	

No.	Part No.	Description	Qty.	Remarks
25	EDG10006LNG	FINISHER, roof trim, Cool Grey	1	
26	EDL10010LNG	PLUG, sunroof motor cover, Cool Grey	1	
27	EFX10008	KEY, sunroof adjustment setting	1	
28	EFZ100080LNG	COVER, sunroof motor, Cool Grey	1	
29	EGQ100070	MOTOR ASSEMBLY, sunroof	1	
30	EGY100110	DRIVE CABLE ASSEMBLY	1	1992-96.
	EGY100180	DRIVE CABLE ASSEMBLY	1	1997 on.
31	EDF101510LNG	HEADLINING, sunroof lid	1	
32	EXM100120	GUIDE, listing rails	10	
33	EEN100030	TAPE, tray to headlining spacer	1	1992-96.
	EEN100070	TAPE, tray to headlining spacer	1	1997 on; 13 x 8 x 1000mm
	EEN100080	TAPE, tray to headlining spacer	1	1997 on; 8 x 8 x 50mm
34	EXM100110	GUIDE, sunroof lid	2	
35	EDL10011	PLUG, sunroof lid guide	4	

Tilt Assembly

Optional, Pick Up

The tilt was the only weatherproof cover officially available for the load area of the Mini Pick Up - although flat tonneau covers are seen on Pick Ups from time to time, they were never offered by the factory and have been supplied as aftermarket accessories or made by specialist automotive trimmers. Many Mini Pick Ups were not fitted with tilts from new, and these cars usually left the factory without the necessary brackets and sockets to attach the tilt frame to.

Tilt cover colours originally included Willow Green, Tweed Grey, Whitehall Beige and Smoke Grey, but all apart from Whitehall Beige were withdrawn very quickly in the 1960s, so to see any original colour other than beige today would be a real rarity indeed. Tilts were never, incidentally, offered by the factory in black.

The spiritual home of the Mini Pick Up tilt, like so many other components of the Mini, was the Longbridge satellite factory in Bargoed, South Wales. In the mid-1990s, the period before the closure of the Bargoed factory, a good rapport was built up between British Motor Heritage and factory staff which amongst many surprising finds and revelations in the factory resulted in the release for the classic car market of a large stash of new Whitehall Beige tilt assemblies which had been squirrelled away presumably since the early 1980s. At time of writing there's still a few about, but if you want one you'd better get in quick.

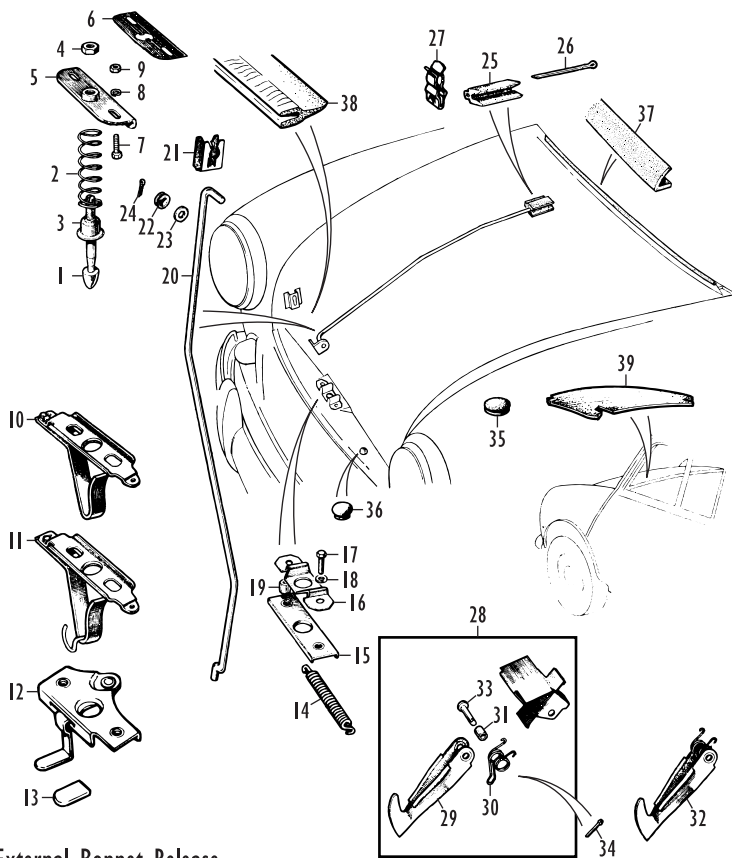
At the same time, the factory templates for producing the tilt plus a bulk quantity of original Whitehall Beige material was also recovered and offered to the safest pair of hands possible - the Mini's foremost trim specialist, Newton Commercial.

36	I4E3060	TILT COVER ASSEMBLY, Whitehall Beige	1	Includes fitted cable, eyelets and turn-buckles.
37	I4A8790	CABLE, cover	1	
38	BD8237	EYELET, cover	17	
39	LFS100	CLINCH PLATE, eyelet	17	
40	I4A8365	TURN-BUCKLE, cover	6	
41	8F2407	CLINCH PLATE, turn-buckle	6	
42	I4A9732	TILT FRAME KIT	1	Includes turn-buckles, lever brackets and attachment hardware.
43	I4A6536	TURN-BUCKLE, body side	11	
44	AB606031	SCREW, turn-buckle to body side	22	
45	I4A8243	HOOP, tilt frame, front	1	
46	I4A8244	HOOP, tilt frame, rear	1	
47	I4A8280	STRUT, tilt frame	3	
48	WNZ103	NUT, wing	9	
49	I4A8784	LEVER BRACKET, RH	1	
50	I4A8785	LEVER BRACKET, LH	1	
51	PMZ308	SCREW, lever bracket attaching	4	
52	WL700101	WASHER, locking	4	
53	FNZ103	NUT	3	

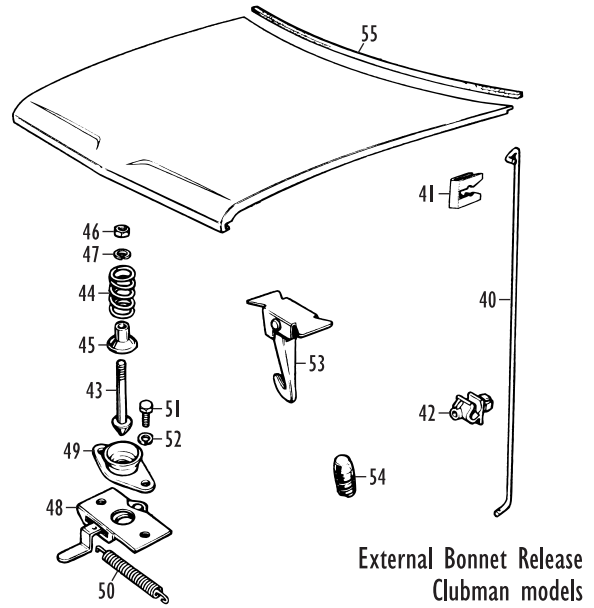
From the mid-1970s, the tilt kit also theoretically included a tie-down rope, with attachments, though even at the time - let alone today - this equipment was rarely to be seen:

54	EAM6546	ROPE, poly hemp, tie down	1	
55	EAM6606	HOOK, tie down	12	
56	EAM6605	PLATE, washer	12	
57	RJ612236	RIVET, hooks to body	24	
58	DNA2582	CLEAT, rope stowage	2	
59	RJ612376	RIVET, cleat to rear pillar	4	

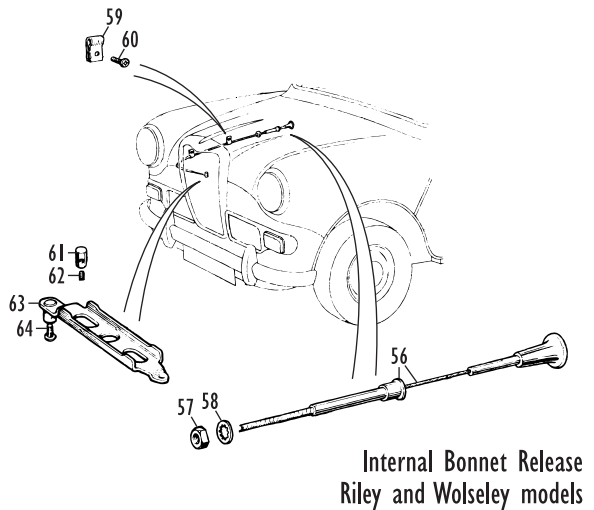
Bonnet Locks and Seals



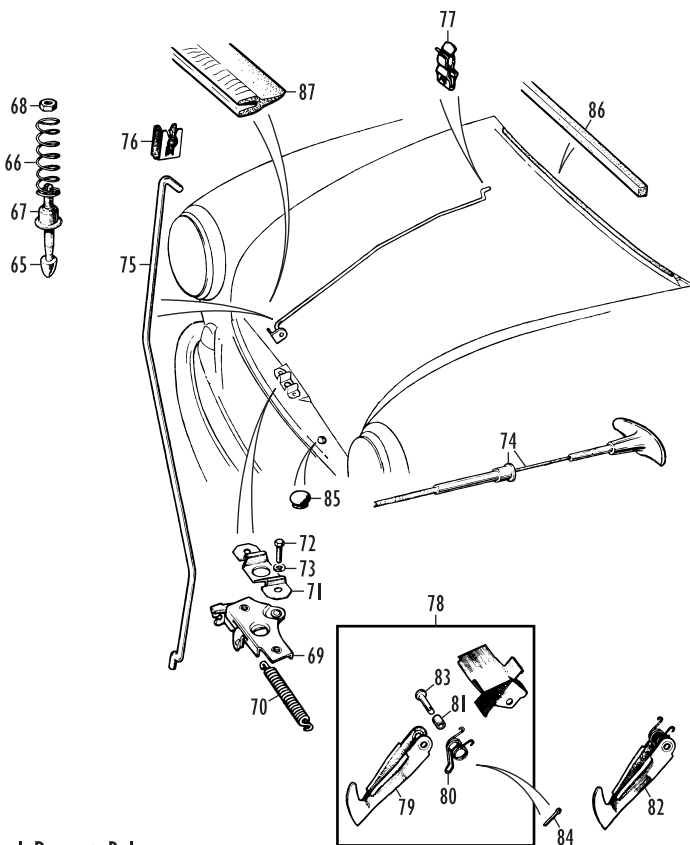
External Bonnet Release
All models 1959-92, except Riley, Wolseley and Clubman



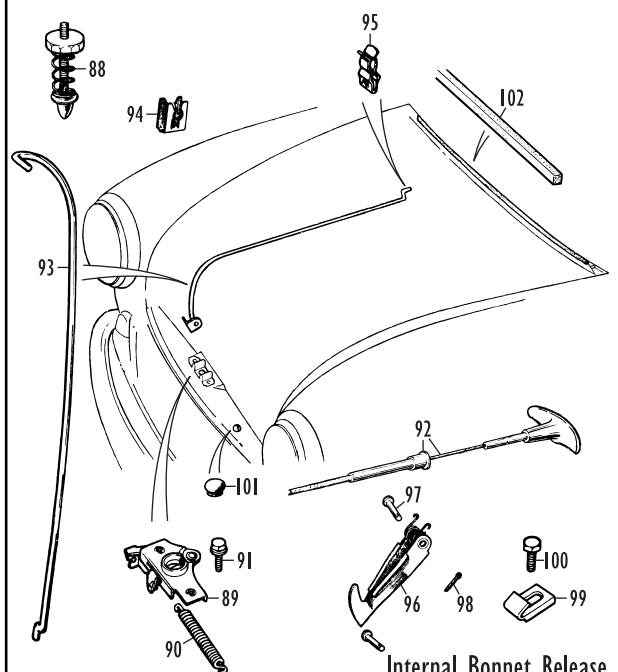
External Bonnet Release
Clubman models



Internal Bonnet Release
Riley and Wolseley models



Internal Bonnet Release
All models 1993-96

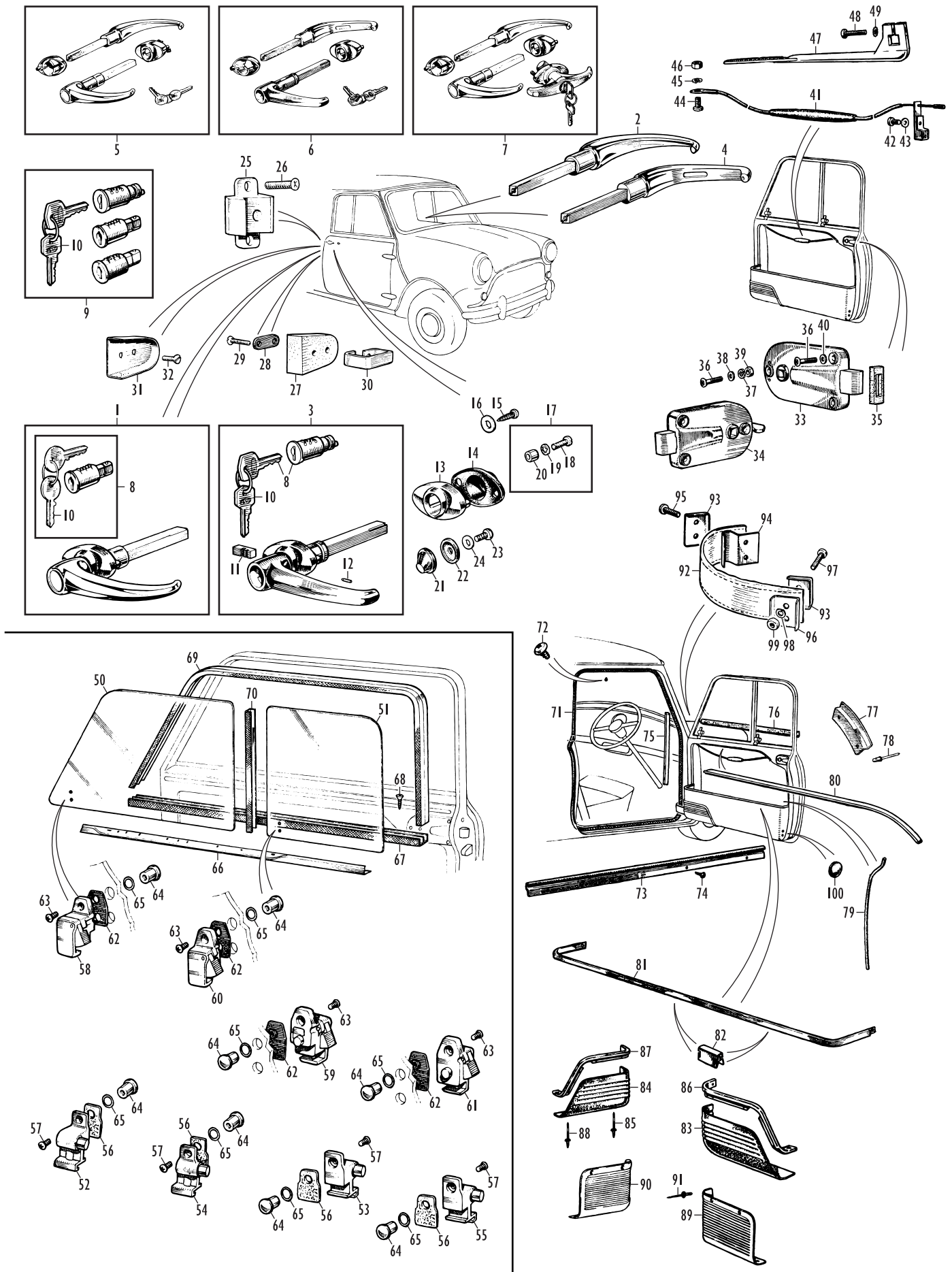


Internal Bonnet Release
All models 1997 on

No.	Part No.	Description	Qty.	Remarks
External Bonnet Release and Bonnet Fittings				
1959-92, Not Clubman Models				
These parts are appropriate for Austin and Morris MkI and MkII models, plus Mini MkIII and MkIVs. Some parts do not fit Riley and Wolseley models, most particularly certain components of the lock mechanism which was internally operated by a cable on those cars.				
1	14A6586	PIN, bonnet lock	1	
2	14B2846	SPRING, bonnet lock pin	1	1959-89 approx.
	FPQ10001	SPRING, bonnet lock pin	1	1990 approx. on; fits earlier models.
3	ADA458	CUP, spring retaining	1	
4	NT606041	NUT, locking pin	1	
5	ADH4869	BRACKET, pin to bonnet	1	MkI and MkII models, 1959-69.
6	ADA3789	GASKET, bracket to bonnet	1	MkI and MkII models, 1959-69.
7	SH604051	SCREW, bracket to bonnet	2	MkI and MkII models, 1959-69.
8	LWZ204	WASHER, locking	2	MkI and MkII models, 1959-69.
9	FNZ104	NUT	2	MkI and MkII models, 1959-69.
10	14A6493	SLIDER, bonnet lock	1	MkI, 1959-67, plus all Van and Pick Up models.
11	ALA6992	SLIDER, bonnet lock, with rod finger pull	1	MkII and MkIII, 1967-75, except Van and Pick Up models.
12	AAM1206	LOCK, bonnet, with lever	1	MkIV, 1976 on.
13	CZK8289	COVER, lever, plastic	1	MkIV, 1976 on.
14	4G2494	SPRING, slider return	1	
	24G3591	SPRING, slider return	1	Alternative.
15	ADH456	SUPPORT, slider	1	MkI, MkII and MkIII, 1959-75.
16	ADA463	PLATE, guide	1	MkI, MkII and MkIII, 1959-75.
	AAM1223	PLATE, guide	1	MkIV, 1976 on.
17	SH604071	SCREW, support and guide plate to body	2	
18	LWZ204	WASHER, locking	2	
19	ADA464	DISTANCE PIECE, support to body	2	MkI, MkII and MkIII, 1959-75.
20	24A857	ROD, bonnet prop	1	Replaces earlier MkI prop rods secured by split pin and washer.
21	24A859	CLIP, prop rod pivot	1	Use with 24A857 prop rod.
22	2H1046	FERRULE, rubber, prop rod	1	Use with prop rods earlier than 24A857.
23	PWZ104	WASHER, plain	1	Use with prop rods earlier than 24A857.
24	CPS206	SPLIT PIN, secures prop rod to bonnet	1	Use with prop rods earlier than 24A857.
25	2H9215	STAY, rubber, prop rod	1	MkI and MkII models, 1959-69.
26	CPS418	SPLIT PIN, secures stay to bonnet	1	MkI and MkII models, 1959-69.
27	CZH209	STAY CLIP, metal, prop rod	1	MkIII and MkIV models, 1969 - 1992.
28	ALA7608	SAFETY CATCH AND BRACKET ASSEMBLY	1	Includes hook, spring, distance piece and clevis pin.
29	4B8644	HOOK, safety catch	1	
30	14A6838	SPRING, safety catch	1	
31	4B8768	DISTANCE PIECE, safety catch	1	
32	FPC100130	HOOK AND SPRING ASSY, safety catch	1	Later type; will replace hook, spring and distance piece.
33	4B8769	CLEVIS PIN, safety catch	1	
34	CPS204	SPLIT PIN, safety catch	1	
35	2H7274	BUFFER, bonnet to body, side	4	MkI and MkII, 1959-69, plus all Van and Pick Up models.
36	14G6856	BUFFER, bonnet to body, front	2	1959-89 approx.
	ADU2072	BUFFER, bonnet to body, front	2	1989 approx. on.
37	14A9010	SEAL, bonnet to rear drain channel	1	Clip on; MkI, MkII and MkIII, 1959-75.
	JRC7008	SEAL, bonnet to rear drain channel	1	Clip on; MkIV, 1976-89 approx.
	CJE10021	SEAL, rear drain channel	1	Self adhesive; 1989 approx. on.
	CJE10028	SEAL, bonnet, self adhesive	1	1997 on.
38	JRC7898	SEAL, bonnet, front	1	1980 approx. - 1996.
39	24A959	INSULATION PAD, under-bonnet	1	MkI and MkII models; MkIII Cooper S.
	UBS001	INSULATION PAD, under-bonnet	1	Non-genuine alternative.
1969 On, Clubman Models				
40	CZH200	ROD, bonnet prop	1	
41	24A859	CLIP, prop rod pivot	1	
42	GHF1120	STAY CLIP, nylon, prop rod	1	
43	14G2444	PIN, bonnet lock	1	
44	4G1588	SPRING, bonnet lock pin	1	
45	4G3676	CUP, spring retaining	1	
46	NT606041	NUT, locking pin	1	
47	LWZ206	WASHER, locking	1	
48	CZH2610	LOCK ASSEMBLY, bonnet	1	
49	24G3169	CUP, locating bonnet pin	1	

No.	Part No.	Description	Qty.	Remarks
50	24G3591	SPRING, lock return	1	
51	PMZ410	SCREW, lock and cup to body	2	
52	LWZ204	WASHER, locking	2	
53	14A366	SAFETY CATCH AND BRACKET ASSEMBLY	1	
54	AAU5486A	BUFFER, bonnet to body	2	
55	CZH849	SEAL, bonnet to rear drain channel	1	1969-75.
	EAM6883	SEAL, bonnet to rear drain channel	1	1976 on.
Internal Bonnet Release and Bonnet Fittings				
1961-69, Riley and Wolseley models				
The parts listed here are those unique to these models; other items like the pin, spring, cup and guide may be found in the components for 1959-92 models. Note that the prop rod and safety catch are not common to 1959-92 models; please contact us if you need any of these parts - we may be able to help.				
56	ALA4842	CABLE ASSEMBLY, bonnet lock	1	
57	FNZ206	NUT, cable assembly to fascia	1	
58	LWZ606	WASHER, shakeproof	1	
59	PCR307	CLIP, cable to inner wing	2	
60	PTZ1003	SCREW, self tapping, clip	2	
61	24G1052	TRUNNION, cable to lock mechanism	1	
62	53K1016	SCREW, cable clamping	1	
63	ALA4799	SLIDER, bonnet lock	1	
64	PMZ308	SCREW, cable to slider	1	
1993-96 Models				
65	14A6586	PIN, bonnet lock	1	
66	FPQ10001	SPRING, bonnet lock pin	1	
67	ADA458	CUP, spring retaining	1	
68	NT606041	NUT, locking pin	1	
69	FPS10002	LOCK ASSEMBLY, bonnet	1	
70	24G3591	SPRING, lock return	1	
71	AAM1223	PLATE, guide	1	
72	SH604071	SCREW, lock ass'y and plate to body	2	
73	LWZ204	WASHER, locking	2	
74	FSE10020	CABLE ASSEMBLY, bonnet release	1	
75	24A857	ROD, bonnet prop	1	
76	24A859	CLIP, prop rod pivot	1	
77	CZH209	STAY CLIP, metal, prop rod	1	
78	ALA7608	SAFETY CATCH AND BRACKET ASSEMBLY	1	Includes hook, spring, distance piece and clevis pin.
79	4B8644	HOOK, safety catch	1	
80	14A6838	SPRING, safety catch	1	
81	4B8768	DISTANCE PIECE, safety catch	1	
82	FPC100130	HOOK AND SPRING ASSY, safety catch	1	Later type; will replace hook, spring and distance piece.
83	4B8769	CLEVIS PIN, safety catch	1	
84	CPS204	SPLIT PIN, safety catch	1	
85	ADU2072	BUFFER, bonnet to body, front	2	
86	CJE10021	SEAL, rear drain channel, self adhesive	1	
	CJE10028	SEAL, bonnet, self adhesive	1	
87	JRC7898	SEAL, bonnet, front	1	
1997 On Models				
88	FPJ100190	LOCK PIN ASSEMBLY	1	
89	FPS100340	LOCK ASSEMBLY, bonnet	1	
90	24G3591	SPRING, lock return	1	
91	DYP10002	SCREW, lock assembly to body	2	
92	FSE100420	CABLE ASSEMBLY, bonnet release	1	
93	BKD360030	ROD, bonnet prop	1	
94	24A859	CLIP, prop rod pivot	1	
95	CZH209	STAY CLIP, metal, prop rod	1	
96	FPC100130	HOOK AND SPRING ASSY, safety catch	1	
97	4B8769	CLEVIS PIN, safety catch	1	
98	CPS204	SPLIT PIN, safety catch	1	
99	ALR1441A	PLATE, striker, safety catch	1	
100	HYG10013	BOLT, striker plate to body	1	
101	ADU2072	BUFFER, bonnet front to body	2	
	ADU2072	BUFFER, safety catch bracket to body	1	1998 on.
102	CJE10021	SEAL, rear drain channel, self adhesive	1	
	CJE10028	SEAL, bonnet, self adhesive	1	

Door Locks, Glazing and Seals - External Hinge Doors



Door Locks, Glazing and Seals - External Hinge Doors

No. Part No. Description Qty. Remarks

Important note: this section concerns early style Mini doors with external hinges and sliding windows, fitted to Saloons and Travellers 1959-69, Rileys and Wolseleys 1961-67 and all Vans and Pick Ups

Exterior Door Lock Components

There are two styles of exterior handle: 1959-65, and 1966 on. From 1966 onwards a safety boss (to stop people catching themselves on the handle) was fitted to the door skin, under the end of the handle. This necessitated a shortening of the handle to accommodate the boss. Originally a lock was only fitted to the driver's side, but all door handles now supplied are of the locking type.

No.	Part No.	Description	Qty.	Remarks
1	24A1140	DOOR HANDLE, locking, RH	1	1959-65; with two keys.
2	14A6829	DOOR HANDLE, locking, LH	1	1959-65; with two keys.
3	24A2083	DOOR HANDLE, locking, RH	1	1966 on, with two keys.
4	24A1833	DOOR HANDLE, locking, LH	1	1966 on, with two keys.
5	24A1140MP	DOOR HANDLE SET, matched pair	1	1959-65; includes two locking handles, escutcheons and two keys.
6	24A2083MP	DOOR HANDLE SET, matched pair	1	1966 on; includes two locking handles, escutcheons and two keys.
7	CHS003	HANDLE SET, doors and boot lid	1	1959-65; 3 piece set, with two keys.
	CHS002	HANDLE SET, doors and boot lid	1	1966-69; 3 piece set, with two keys.
8	37H9651	LOCK BARREL, handle	1	With two keys.
9	BARR002	LOCK BARREL SET, ignition switch, door and boot lid	1	3 piece set, with two keys.
10		KEY, replacement, see note below	A/R	

Pre-cut 'FS' type keys (the most common key type) can be ordered using the number from your existing keys (or the lock barrel, if it has the number on it); the number will be between FS879 - FS955.

11	17H6596	BOLT, locking	2	
12	27H8618	PIN, retaining	2	
13	24A2245	ESCUTCHEON, locking handle	1	1966 on; also replaces 1959-66 types.
	24A2246	ESCUTCHEON, non-locking handle	1	1966 on; also replaces 1959-66 types.
14	ADA3817	SEAL, escutcheon and handle to door	2	
15	PTZ604	SCREW, self tapping, escutcheon to door	4	Original pre-1966 escutcheons.
16	PWZ203	WASHER, plain	4	Original pre-1966 escutcheons.
17	KMN319	FITTING KIT, escutcheon	2	1966 on type escutcheons; includes 2 screws, 2 washers, 2 distance pieces
18	PMZ305	SCREW, escutcheon to door	4	1966 on type escutcheons.
19	LWZ603	WASHER, shakeproof	4	1966 on type escutcheons.
20	24A2086	DISTANCE PIECE	4	1966 on type escutcheons.
21	24A1834	BOSS, safety	2	1966 on.
22	24A1835	SEAL, boss to door	2	1966 on.
23	PMZ306	SCREW, boss to door	2	1966 on.
24	LWZ603	WASHER, shakeproof	2	1966 on.
25	14A6832	STRIKER, door lock	2	
26	RMZ310	SCREW, striker to body	6	
27	14A6833	BUFFER, male dovetail, nylon	2	
28	14A6834	FIXING PLATE, buffer	2	
29	CMZ210	SCREW, buffer to door	4	
30	14A7680	TAPPED PLATE, buffer, inside door	2	
31	14A6835	PLATE, female dovetail	2	
32	CMZ204	SCREW, plate to body	4	

Interior Door Lock Components

In the early 1960s most Minis employed door pull cables, while more upmarket (some Super Deluxe, all Cooper, Riley and Wolseley) models used more durable but less accessible chromed handles. Often these were used to replace the failure-prone cables, and by 1968 the factory was fitting all models with the metal handles. Nowadays, it's a matter of practicality versus originality: you make the choice.

No.	Part No.	Description	Qty.	Remarks
33	24A2145	LOCK ASSEMBLY, without safety catch, RH	1	Driver's side, RHD models.
	24A2146	LOCK ASSEMBLY, without safety catch, LH	1	Driver's side, LHD models.
34	24A2144	LOCK ASSEMBLY, with safety catch, LH	1	Passenger's side, RHD models.
	24A2143	LOCK ASSEMBLY, with safety catch, RH	1	Passenger's side, LHD models.
35	14A8568	SEAL, felt, lock to door	2	
36	RMZ316	SCREW, lock to door	6	
37	WL700101	WASHER, locking	2	
38	PWZ103	WASHER, plain	2	
39	FNZ103	NUT	2	
40	53K3452	WASHER, shakeproof	4	
41	24A664	CABLE, door pull	2	1959-68; alternative to metal handle.
42	PMZ308	SCREW, clamping cable to lock	2	
43	PWZ103	WASHER, plain	2	
44	PMZ308	SCREW, cable to door	2	
45	WL700101	WASHER, locking	2	
46	FNZ103	NUT	2	
47	GLZ119A	HANDLE, interior, original chromed finish	2	1961 on; alternative to pull cable.
	GLZ119	HANDLE, interior, non-original black finish	2	Alternative.
48	PMZ314	SCREW, clamping handle to lock	2	
49	LWZ503	WASHER, shakeproof	2	

No. Part No. Description Qty. Remarks

Door Glazing

1959-60 models used door glasses and catches which are no longer available; to replace either, later matching glasses and catches can be used. Later catches came in two types: 1960-63 chromed metal catches (similar to the 1959-60 originals) and the less durable 1963 on black and white plastic ones.

No.	Part No.	Description	Qty.	Remarks
50	14A7811	DOOR GLASS, front, clear	2	1960 on.
51	14A7810	DOOR GLASS, rear, clear	2	1960 on.
52	14A7812	CATCH, chromed, front glass, RH	1	1960-63.
53	14A7813	CATCH, chromed, front glass, LH	1	1960-63.
54	14A7814	CATCH, chromed, rear glass, RH	1	1960-63.
55	14A7815	CATCH, chromed, rear glass, LH	1	1960-63.
56	14A7816	SEAL, chromed catch to glass	4	1960-63.
57	RMP306	SCREW, catch to glass	4	1960-63.
58	24A1194	CATCH, plastic, front glass, RH	1	1963 on.
59	24A1195	CATCH, plastic, front glass, LH	1	1963 on.
60	24A1196	CATCH, plastic, rear glass, RH	1	1963 on.
61	24A1197	CATCH, plastic, rear glass, LH	1	1963 on.
62	24A1198	SEAL, plastic catch to glass	4	1963 on.
63	RMP307	SCREW, catch to glass	4	1963 on.
64	14A8151	BOSS, catch securing	4	
65	14A7065	WASHER, fibre, boss to glass	4	
66	14A6769	STRIP, window catch, chromed, RH	1	1959-61.
	24A1303	STRIP, window catch, chromed, RH	1	1961 on.
	14A6770	STRIP, window catch, chromed, LH	1	1959-61.
	24A1304	STRIP, window catch, chromed, LH	1	1961 on.
67	24A88	CHANNEL, door glass, lower	2	
68	CTP604	SCREW, channel and catch strip to door	6	
69	14A7167	CHANNEL, door glass, upper	2	Sold per 2 metre length; 134cm required per door. Original rigid type.
	14A7167S	CHANNEL, door glass, upper	2	Sold pre-cut; later felt type
70	EAM8530/1	DRAUGHT EXCLUDER, door glass	2	

Door Seals

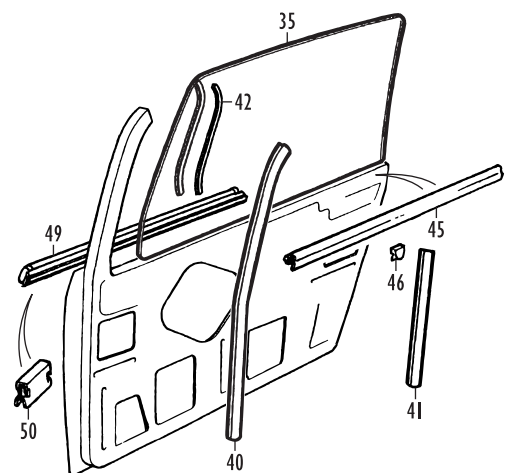
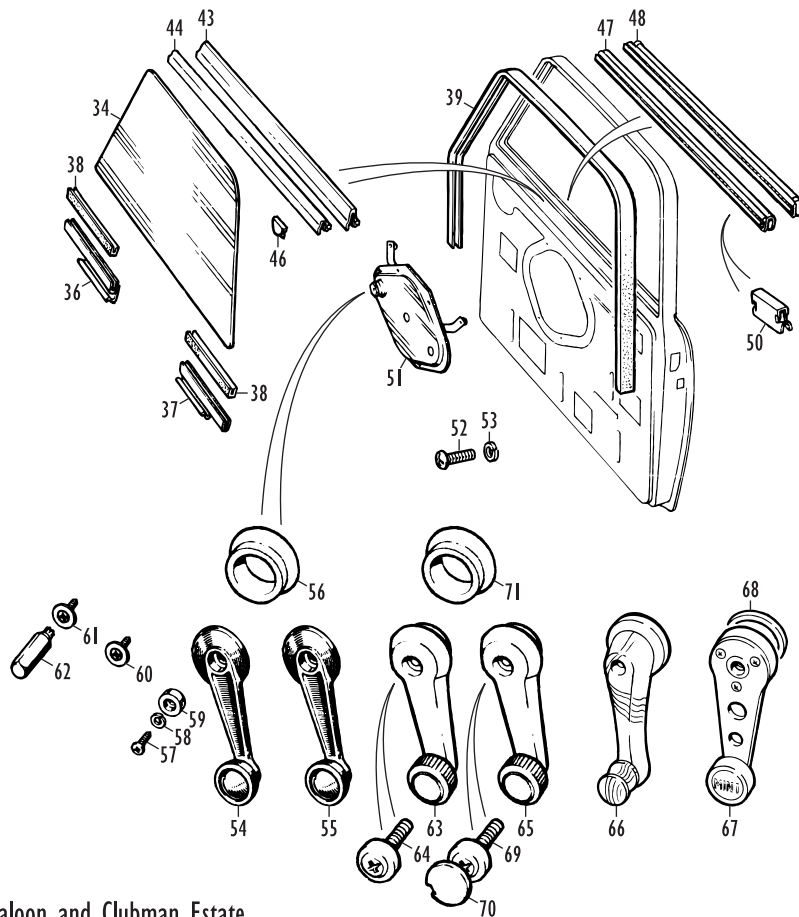
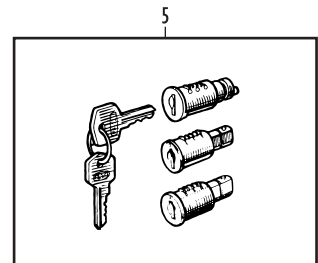
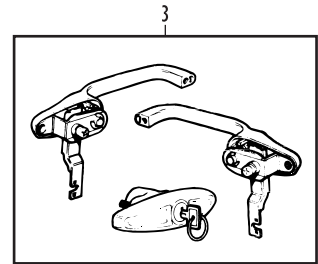
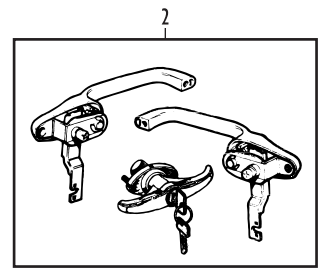
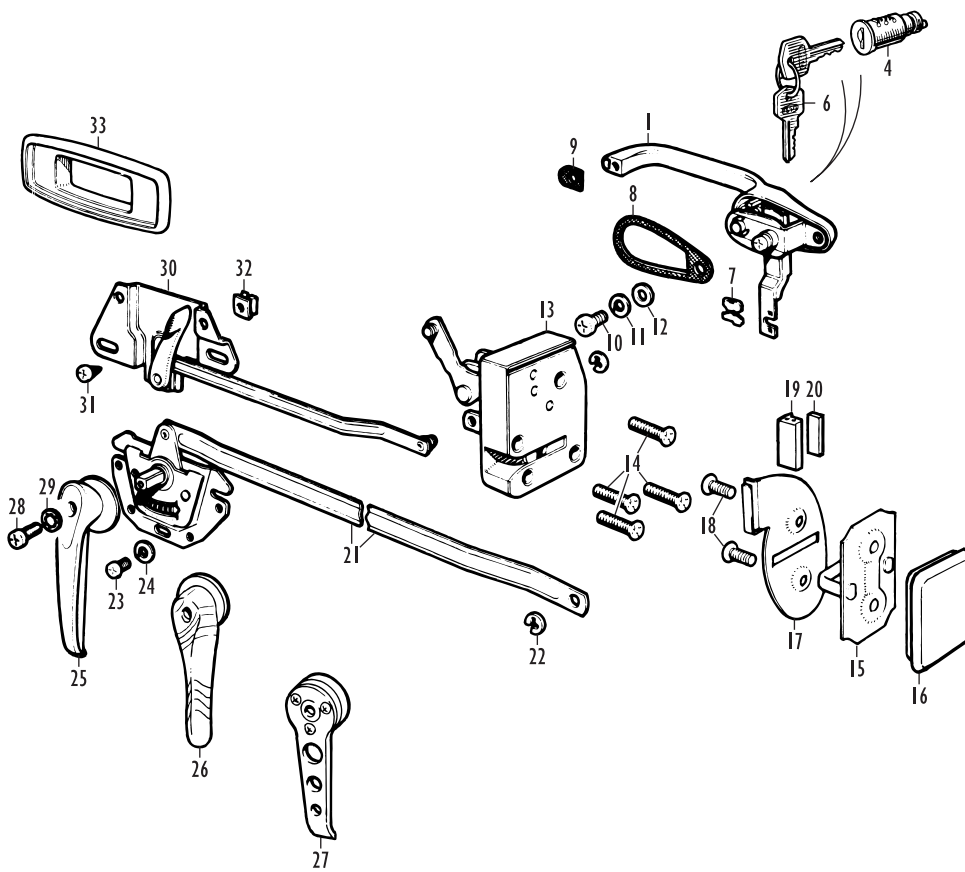
Door seals on Saloons and Travellers depended on the year and interior trim - black rubber was the norm, with coloured fleck on some models. Vans and Pick Ups used black rubber, except the earliest models which used tan. Coloured seals are sometimes available; please contact us for details.

No.	Part No.	Description	Qty.	Remarks
71	24A1351	DOOR SEAL, black rubber	2	1959-69, Saloon and Traveller; 1961-76, Van and Pick Up.
	XGA9934	DOOR SEAL, black rubber and nylon	2	1977 on, Van and Pick Up.
72	24G4245	SCREW, door seal attaching	4	
73	14A7270	KICK STRIP, door seal, bright alloy, pair	1	1959-68.
	ALA7613	KICK STRIP, door seal, black plastic, each	2	1968 on.
74	36036K	SCREW, kick strip attaching	8	
75	ADC1731	WEATHERSTRIP, front door A post	2	1959-60.
76	ADA3869	WAIST SEAL, rubber	2	1959-60.
77	14A9513	PLATE, deflector	2	1960-61.
78	2K2610	RIVET, plate to door	4	1960-61.
79	14A7930	DRAIN TUBE, rubber	4	1960 on.

Interior Door Fittings and Finishers

No.	Part No.	Description	Qty.	Remarks
80	24A1517	STRIP, safety, top of door flange covering	2	
81	24A1169	MOULDING, door pocket	2	
82	ADH3809	CLIP, moulding to door pocket	8	
83	ADA3733	PROTECTOR, door pocket, RH	1	Morris Saloons and Travellers 1959-62.
84	ADA3734	PROTECTOR, door pocket, LH	1	Morris Saloons and Travellers 1959-62.
85	DAP1023	RIVET, protector to door pocket	4	Morris Saloons and Travellers 1959-62.
86	ADA3735	MOULDING, protector, RH	1	Morris Saloons and Travellers 1959-62.
87	ADA3736	MOULDING, protector, LH	1	Morris Saloons and Travellers 1959-62.
88	BDA499	RIVET, moulding and protector to pocket	14	Morris Saloons and Travellers 1959-62.
89	14A7176	PROTECTOR, door pocket, RH	1	Except Morris 1959-62, Van and Pick Up.
90	14A7177	PROTECTOR, door pocket, LH	1	Except Morris 1959-62, Van and Pick Up.
91	DAP1023	RIVET, protector to door pocket	8	Except Morris 1959-62, Van and Pick Up.
92	ALE1221	CHECK STRAP door, Black	2	
	14E4289	CHECK STRAP door, Red	2	
	14E4291	CHECK STRAP door, Green	2	
	14E4290	CHECK STRAP door, Grey	2	
93	14A764	RETAINER, check strap	4	
94	14A6745	BRACKET, check strap	2	
95	RMP414	SCREW, check strap to A post	4	
96	14A6744	STIFFENER, check strap	2	
97	RMP414	SCREW, check strap to door	4	
98	LWZ204	WASHER, locking	4	
99	FNZ104	NUT	4	
100	2H7274	PLUG, check strap screw hole in pocket	4	Fit to unused holes at opposite end of pocket to check strap.

Door Locks, Glazing and Seals - Internal Hinge Doors



Saloon and Clubman Estate

Rover Mini Cabriolet

Door Locks, Glazing and Seals - Internal Hinge Doors

Important note: this section concerns later style Mini doors with internal hinges and wind-up windows, fitted to Saloons, Clubmans, Clubman Estates and Cabriolets 1969 on, plus Rileys and Wolseleys 1967-69.

Items in this section directly appropriate for Riley and Wolseley 1967-69 models include door handles, door glasses, glass channels and waist seals. Other items, such as window regulators, can be used with slight modification. However, parts like the entire lock system (bar the exterior and interior handles) are totally different. Beware and check suitability before you buy!

Exterior Door Lock Components

No.	Part No.	Description	Qty.	Remarks
1	18G8899	HANDLE ASSEMBLY, door, RH, chrome	1	1967-71; with two keys.
	18G8900	HANDLE ASSEMBLY, door, LH, chrome	1	1967-71; with two keys.
	CXB101280MM	HANDLE ASSEMBLY, door, RH, chrome	1	1971 on; with two keys.
	CXB101290MM	HANDLE ASSEMBLY, door, LH, chrome	1	1971 on; with two keys.
	CXB101280PMD	HANDLE ASSEMBLY, door, RH, Black	1	Std. models 1980-88; with two keys.
	CXB101290PMD	HANDLE ASSEMBLY, door, LH, Black	1	Std. models 1980-88; with two keys.
	JRC8180	HANDLE ASSEMBLY, door, RH, Nimbus Grey	1	Some limited editions 1980-88, plus standard models 1988-96.
	JRC8181	HANDLE ASSEMBLY, door, LH, Nimbus Grey	1	Some limited editions 1980-88, plus standard models 1988-96.
2	CHS001E	HANDLE SET, doors and boot lid, chrome, 1 with early boot lid handle	1	1969-70; 3 piece set, with two keys.
3	CHS001	HANDLE SET, doors and boot lid, chrome, 1 with later boot lid handle	1	1971 on; 3 piece set, with two keys.
	HS001B	HANDLE SET, doors and boot lid, Black 1 with later boot lid handle	1	3 piece set, with two keys.
4	37H2064	LOCK BARREL, handle, with two keys	2	
5	BARR001	LOCK BARREL SET, doors and boot lid 1 KEY, replacement, see note below	1	1969 on; 3 piece set, with two keys. A/R
Pre-cut 'FS' type keys (the most common key type) can be ordered using the number from your existing keys (or the lock barrel, if it has the number on it); the number will be between FS879 - FS955.				
7	37H6519	RETAINER, operating link	2	
8	ALAS795	GASKET, handle to door, large	2	
9	CZH1729	GASKET, handle to door, small	2	
10	PMZ306	SCREW, handle to door	4	
11	WL700101	WASHER, locking	4	
12	PWZ103	WASHER, plain	4	
13	CZH3528	LOCK ASSEMBLY, RH	1	
	CZH3529	LOCK ASSEMBLY, LH	1	
14	ZCT410	SCREW, lock to door	8	
15	CZH627	STRIKER, lock	2	
16	CZH628	PLUG, striker hole in B post	2	
17	CZD1184	COVER PLATE, striker, RH	1	1969-90.
	CZD1185	COVER PLATE, striker, LH	1	1969-90.
	CZG5254	COVER PLATE, striker	2	1990 on.
18	SF604051	SCREW, cover plate and B post to striker	4	
19	CZD1351	SEAL, cover plate	2	
20	CZD1350	RETAINER, seal	2	

Interior Door Lock Components

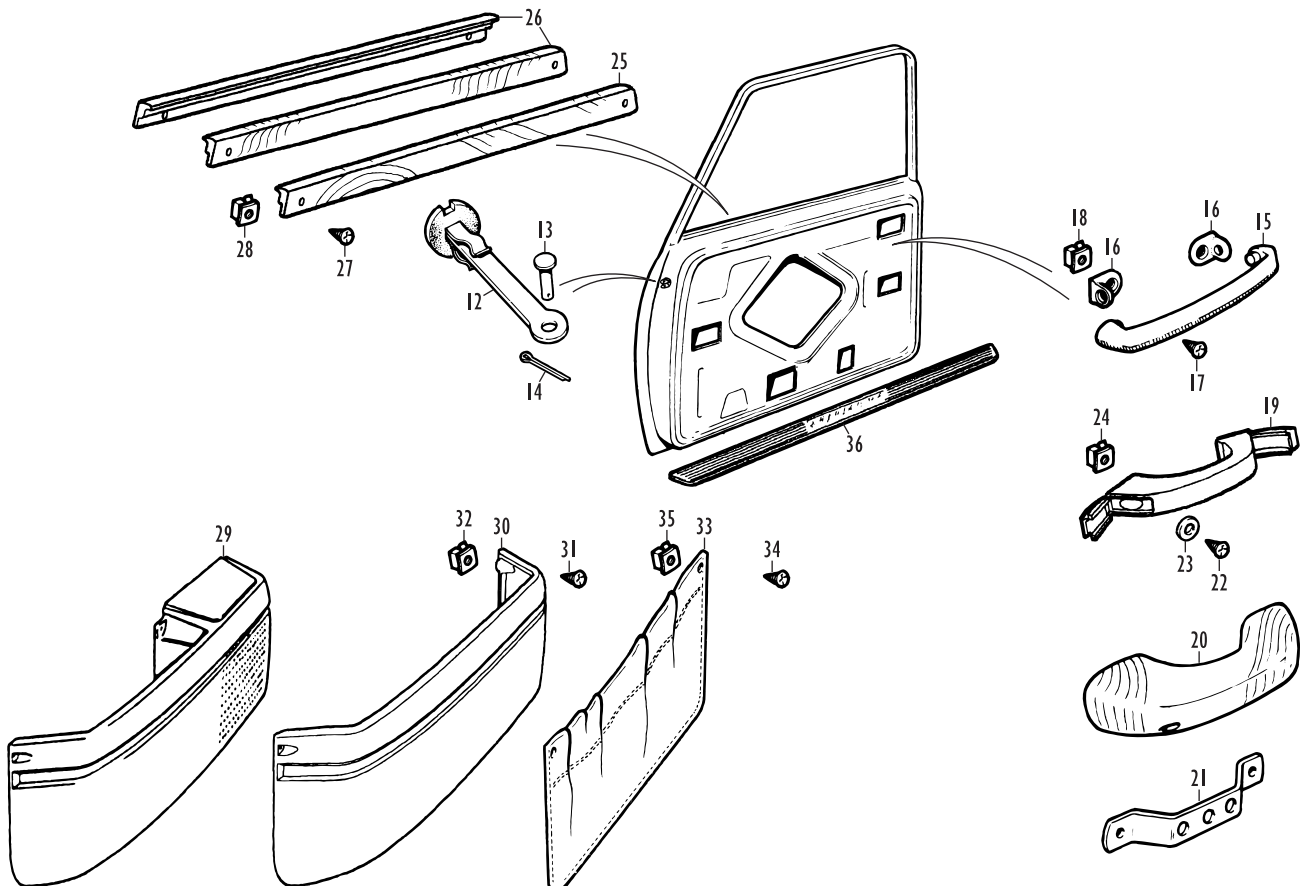
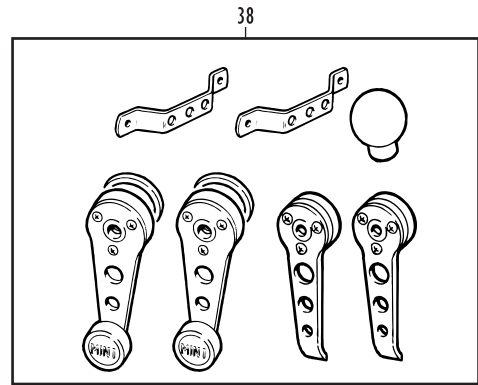
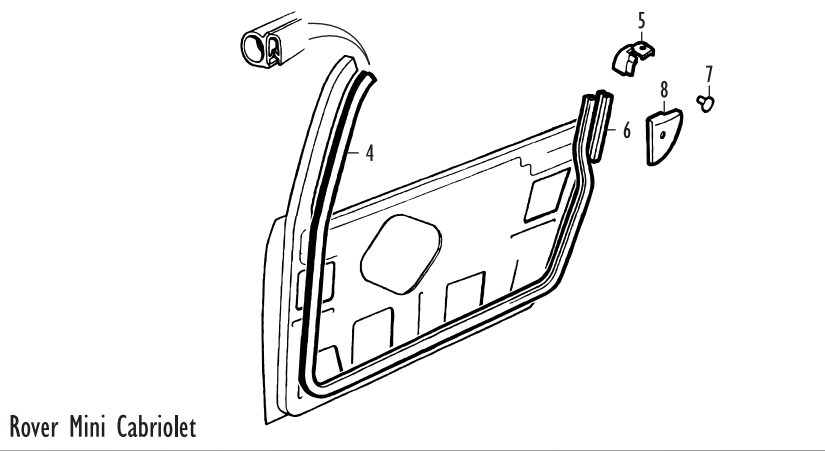
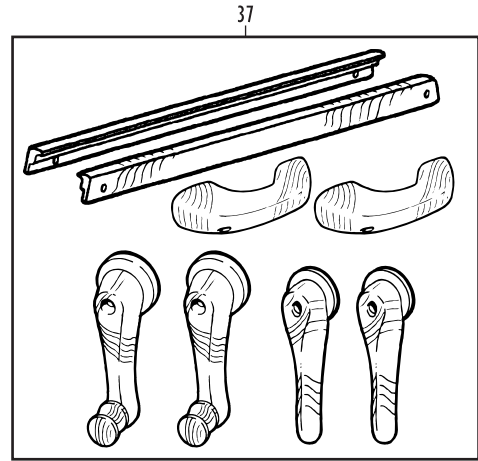
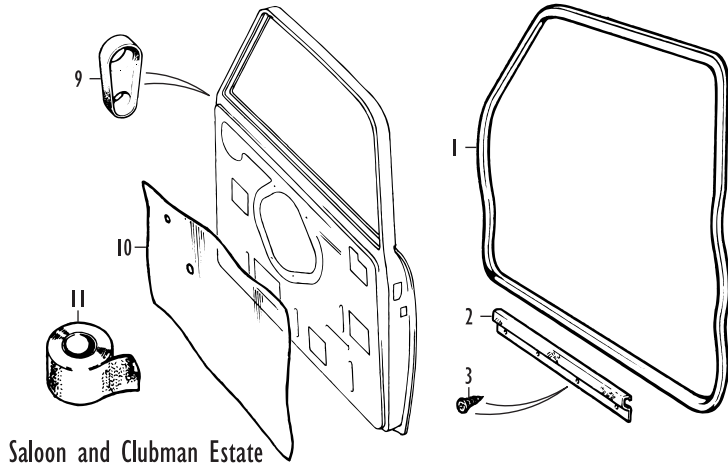
21	CZH640	REMOVE CONTROL, RH	1	
	CZH641	REMOVE CONTROL, LH	1	
22	13H2899	CLIP, remote control to lock	2	
23	PMZ306	SCREW, remote control to door	6	
24	WL700101	WASHER, locking	6	
25	JPC8387PA	HANDLE, interior, Black plastic	2	
	JPC8387LOY	HANDLE, interior, Granite plastic	2	
	JPC8387C	HANDLE, interior, chromed finish	2	Aftermarket alternative.
The plastic handle came originally in other colours to match the interior trim of 1980s and 1990s models. Please contact us for details of colour availability.				
26	FVC101730	HANDLE, interior, wood	2	Silverstone; included in wood finisher kit.
27	FVC102690MDC	HANDLE, interior, alloy	2	Classic 2000 Cooper Sport models.
28	PMZ308	SCREW, handle to remote control	2	For plastic or wood handle.
	CMZ312	SCREW, handle to remote control	2	For alloy handle.
29	WF702101	WASHER, shakeproof	2	
30	CZH616	CONTROL, lock, RH	1	1969-92.
	CZH617	CONTROL, lock, LH	1	1969-92.
	EKU100020MM	CONTROL, lock, RH	1	1993 on.
	EKU100030MM	CONTROL, lock, LH	1	1993 on.
31	36052Z	SCREW, self tapping, lock control to door	4	
32	GFK3428	LOKUT NUT, in door frame	4	
33	CZH611PA	BEZEL, lock lever, Black	2	

No.	Part No.	Description	Qty.	Remarks
	CZH611LNF	BEZEL, lock lever, Ash Grey	2	
	FVJ100110MM	BEZEL, lock lever, chromed	2	1997 on.
	CLP001	BEZELS, lock lever, chromed, pair	2	Aftermarket alternative.
This bezel came originally in other colours to match the interior trim of 1980s and 1990s models. Please contact us for details of colour availability.				

Door Glazing

34	ALAS723	DOOR GLASS, clear	2	Saloon and Clubman Estate models.
	CZH4007	DOOR GLASS, green tinted	2	Saloon and Clubman Estate models.
35	CUB10087	DOOR GLASS, green tinted	2	Rover Mini Cabriolet, 1993-96.
36	ALAS746	CHANNEL, door glass, front	2	
37	ALAS747	CHANNEL, door glass, rear	2	
38	ALAS746SR	GLAZING RUBBER, channel	4	
39	PAM3076	SEAL, door glass channel, upper, RH	1	Saloon and Clubman Estate models.
	PAM3077	SEAL, door glass channel, upper, LH	1	Saloon and Clubman Estate models.
40	CFE10102	SEAL, door glass channel, front	2	Rover Mini Cabriolet, 1993-96.
41	CFE10104	SEAL, door glass channel, rear, RH	1	Rover Mini Cabriolet, 1993-96.
	CFE10105	SEAL, door glass channel, rear, LH	1	Rover Mini Cabriolet, 1993-96.
42	CFE101380PMA	SEAL, door glass frame	4	Rover Mini Cabriolet, 1993-96.
43	ALAS772	WAIST FINISHER, inner, draught excluder, RH	1	Riley and Wolseley, 1967-69; Saloon and Clubman Estate, 1969-77.
	ALAS773	WAIST FINISHER, inner, draught excluder, LH	1	Riley and Wolseley, 1967-69; Saloon and Clubman Estate, 1969-77.
44	EJU10003	WAIST FINISHER, inner, draught excluder	2	Saloon and Clubman Estate, 1977 on.
45	EJU100200	WAIST FINISHER, inner, draught excluder	2	Rover Mini Cabriolet, 1993-96.
46	EYC10048	CLIP, inner waist finisher to door	10	
47	CZH1666	WAIST FINISHER, outer, glass sealing, RH	1	Saloon and Clubman Estate, 1969-79; spooned metal ends.
	CZH1667	WAIST FINISHER, outer, glass sealing, LH	1	Saloon and Clubman Estate, 1969-79; spooned metal ends.
48	PAM1014	WAIST FINISHER, outer, glass sealing, RH	1	Saloon and Clubman Estate, 1980 on; black plastic end caps.
	PAM1015	WAIST FINISHER, outer, glass sealing, LH	1	Saloon and Clubman Estate, 1980 on; black plastic end caps.
49	EJU100210	WAIST FINISHER, outer, glass sealing, RH	1	Rover Mini Cabriolet, 1993-96.
	EJU100220	WAIST FINISHER, outer, glass sealing, LH	1	Rover Mini Cabriolet, 1993-96.
50	ADH3809	CLIP, outer waist finisher to door	10	
51	CZH646	REGULATOR, window, RH	1	
	CZH647	REGULATOR, window, LH	1	
52	PMZ403	SCREW, regulator to door	8	
53	LWZ204	WASHER, locking	8	
54	CZA2123	HANDLE, window regulator	2	1969-71; convex knob centre.
55	CZA7109	HANDLE, window regulator, chromed	2	1971-79; concave knob centre.
	CZA7109C	HANDLE, window regulator, chromed	2	Aftermarket alternative.
	CZA7109SET	HANDLES, window regulator, chromed, pair	1	Aftermarket alternative.
56	CZH701PA	BEZEL, regulator handle	2	
57	PMZ308	SCREW, handle to regulator	2	1969-74.
58	WF702101	WASHER, shakeproof	2	1969-74.
59	CZA2367	ESCUTCHEON, screw	2	1969-74.
60	CZA7194	SCREW, flanged head, handle to regulator	2	1974-80, crosshead drive.
61	ZKC3317	SCREW, flanged head, handle to regulator	2	1974-80, Torx drive alternative.
62	17H6679	KEY, Torx drive	1	Use to fit ZKC3317 screw.
63	YGA4330	HANDLE, window regulator, Black	2	1980-83.
64	ADU2534	SCREW, handle to regulator	2	1980-83.
65	YXX3199PA	HANDLE, window regulator, Black	2	1983 on.
	YXX3199LOY	HANDLE, window regulator, Granite	2	1983 on.
	YXX3199LNF	HANDLE, window regulator, Ash Grey	2	1983 on.
66	FVL100030	HANDLE, window regulator, Wood	2	Silverstone; included in wood finisher kit.
67	FVL105120MDC	HANDLE, window regulator, Alloy	2	Classic 2000 Cooper Sport models.
68	EYF000010	WASHER, alloy handle to bezel	2	Classic 2000 Cooper Sport models.
69	ADU8081	SCREW, handle to regulator	2	1983 on.
70	YXX3200PA	PLUG, handle, Black	2	1983 on.
	YXX3200LNF	PLUG, handle, Ash Grey	2	1983 on.
71	CZH701PA	BEZEL, regulator handle, Black	2	
	CZH701LOY	BEZEL, regulator handle, Granite	2	
	CZH701LNF	BEZEL, regulator handle, Ash Grey	2	
	FVJ100110MM	BEZEL, regulator handle, bright finish	2	
This handle and bezel came originally in other colours to match the interior trim of 1980s and 1990s models. Please contact us for details of colour availability.				

Door Locks, Glazing and Seals - Internal Hinge Doors



Door Locks, Glazing and Seals - Internal Hinge Doors

Important note: this section concerns later style Mini doors with internal hinges and wind-up windows, fitted to Saloons, Clubmans, Clubman Estates and Cabriolets 1969 on.

The only items in this section that can be used on Riley and Wolseley models built between 1967 and 1969 with similar (but not the same) internally hinged doors are the door seals and kick strips. As always, if you need a Riley or Wolseley part that is not listed here, please contact us - we may still be able to help you.

Door Seals

Door seals through the 1970s were made in a variety of colours to match the interior trim colours then being fitted. Please contact us for details of colours other than black which may currently be available.

The door seal kick strip is also available in bright alloy finish, as used on Mk I and early Mk II Minis, for that extra classy look when you open the door. The part number is 14A7270, which is a set of two kick strips (whereas the black plastic kick strip ALA7613 is sold individually).

1	BMP400	DOOR SEAL, black	2	Saloon and Clubman Estate models.
2	ALA7613	KICK STRIP, door seal, black plastic	2	
3	36036K	SCREW, kick strip attaching	8	

The Lamm Cabriolet, being a conversion of a Mini saloon, uses standard saloon door seals trimmed to fit. The later Rover assembled Mini Cabriolet however uses a bespoke design consisting of three seals per side, plus rear seal covers:

4	CFB100880	SEAL, door, front, RH	1	Rover Mini Cabriolet, 1993-96.
	CFB100890	SEAL, door, front, LH	1	Rover Mini Cabriolet, 1993-96.
5	CFE101560PMA	SEAL, door, upper rear, RH	1	Rover Mini Cabriolet, 1993-96.
	CFE101570PMA	SEAL, door, upper rear, LH	1	Rover Mini Cabriolet, 1993-96.
6	CFE101320PMA	SEAL, door, lower rear, RH	1	Rover Mini Cabriolet, 1993-96.
	CFE101330PMA	SEAL, door, lower rear, LH	1	Rover Mini Cabriolet, 1993-96.
7	HYC10014	CLIP, upper rear door seal	2	Rover Mini Cabriolet, 1993-96.
8	CFV100020	COVER, rear door seal, RH	1	Rover Mini Cabriolet, 1993-96.
	CFV100030	COVER, rear door seal, LH	1	Rover Mini Cabriolet, 1993-96.
9	CZH4052	SEAL, door check arm, RH	1	1969-86 approx.
	CZH4053	SEAL, door check arm, LH	1	1969-86 approx.
	CGE10038	SEAL, door check arm, RH	1	1986 approx. on.
	CGE10039	SEAL, door check arm, LH	1	1986 approx. on.

Either water shedders or sealing tape should be refitted to the access holes on the door inner panel after building up a new door or working on the window regulator or door lock mechanism. Failure to do so invariably results in the door interior trim panel quickly becoming damp and warping beyond repair. Particularly upsetting if you've just finished restoring your Mini with a brand new interior trim kit...

10	EJD10086	SHEDDER, water, door access holes, RH	1	1986 approx. on; may be fitted to earlier models.
	EJD10087	SHEDDER, water, door access holes, LH	1	1986 approx. on; may be fitted to earlier models.
11	GWS219	SEALING TAPE, door access holes	A/R	Alternative to shedder; 60 metre roll x 4 1/2" wide.

Interior Door Fittings and Finishers

12	ADA5671	ARM ASSEMBLY, door check	2	
13	CLZ412	CLEVIS PIN, check arm	2	
14	ZPS205	SPLIT PIN	2	
15	CZH762	HANDLE, door pull, Black plastic	2	1969-83.
	CZH762C	HANDLE, door pull, chromed finish	2	Aftermarket alternative.
16	CZH763	END, handle, chrome	4	1969-83.
17	RTP1005	SCREW, handle end to door	4	1969-83.
18	GFK3428	LOKUT NUT, in door frame	4	1969-83.
19	YXX451PA	HANDLE, door pull, Black plastic	2	1983 on.
	YXX451LOY	HANDLE, door pull, Granite plastic	2	1983 on.

This handle came originally in other colours to match the interior trim of 1980s and 1990s models. Please contact us for details of colour availability.

20	EJK100130	HANDLE, door pull, wood	2	Silverstone; included in wood finisher kit.
21	EJE105760MDC	HANDLE, door pull, alloy	2	Classic 2000 Cooper Sport models.
22	AB610055	SCREW, plastic or wood handle to door	4	1983 on.
	EYP106490	SCREW, alloy handle to door	4	Classic 2000 Cooper Sport models.
23	AJD7374	WASHER, plain	4	1983 on.
24	GFK3428	LOKUT NUT, in door frame	4	1983 on.
25	EKH100270	FINISHER, door waist, wood, RH	1	Silverstone; included in wood finisher kit.
	EKH100280	FINISHER, door waist, wood, LH	1	Silverstone; included in wood finisher kit.
26	EKH100350ANW	FINISHER KIT, door waist, wood	1	Classic 2000 Knightsbridge model.

Wood finishers for the Rover Mini Cabriolet were supplied in the range of full veneer sets (including fascia) for that model. Please contact us for details of availability.

27	RTP2808	SCREW, bronze, wood finisher to door	10	
28	ACU5431A	LOKUT NUT, in door frame	10	

The late 1970s Mini Special, produced as a left hand drive mainstream model and as a limited edition right hand drive anniversary Mini (celebrating 20 years of production), was loaded with many new features distinguishing it from other Minis. Many of these features were later used in ordinary Mini production while others were carried on thereafter as options or accessories. Examples of the former are the black plastic wheel arch extensions fitted to all Minis from 1984 on, still referred to today as the Special arch; good examples of the latter are the very practical and useful door bins which doubled up as speaker housings - thereby removing the need to cut big holes in the doors and door trims in order to fit front speakers in the car:

29	GCA8043	DOOR BIN with speaker housing, RH, Black	1	Special models and optional 1980-85.
	GCA8044	DOOR BIN with speaker housing, LH, Black	1	Special models and optional 1980-85.

The almost as useful plain door bin was introduced on HL models in 1980, and subsequently was fitted to the HLE, Mayfair, Cooper, certain limited editions and most Minis from 1997 on. It went some way towards making up for the loss of the pockets of the old sliding window doors after wind up window doors were introduced. The plain door bin can be fitted to any wind up window type Mini door.

30	YGA452	DOOR BIN, Black	2	1980 on, not standard models.
	YXX452LOY	DOOR BIN, Granite	2	1980 on, not standard models.

This door bin came originally in other colours as well to match the interior trim of 1980s and 1990s models. Please contact us for details of colour availability.

31	AD610055A	SCREW, door bin to door	12/10	Quantity decreases for bins without speaker housings.
32	GFK3428	LOKUT NUT, in door frame	6/4	Quantity decreases for bins without speaker housings.
33	EJV100820PMA	DOOR POCKET, leather, Black, RH	1	1999-2000, some limited editions.
	EJV100820CVC	DOOR POCKET, leather, Grenadine Red, RH	1	1999-2000, some limited editions.
	EJV100830PMA	DOOR POCKET, leather, Black, LH	1	1999-2000, some limited editions.
	EJV100830CVC	DOOR POCKET, leather, Grenadine Red, LH	1	1999-2000, some limited editions.

This door pocket came originally in other colours as well to match the interior trim of certain late 1990s limited editions. Please contact us for details of colour availability.

34	CTP2606	SCREW, bronze, leather pocket to door	6	
35	GFK3428	LOKUT NUT, in door frame	6	
36	EAN10044MMH	TREADPLATE, door sill, bright finish	2	Lamm Cabriolet and Rover Mini Cabriolet.
37	FCE100750	FINISHER KIT, door waist, with handles, wood	1	Silverstone model; kit includes waist finishers and handles for two doors.
	VUB103680	FINISHER KIT, door waist, with handles, wood	1	1997 on option; kit includes waist finishers and handles for two doors.
38	VUB103670	HANDLE KIT, alloy	1	1997 on option; kit includes handles for two doors and gear lever knob.

Late Model Mini Wood Trim

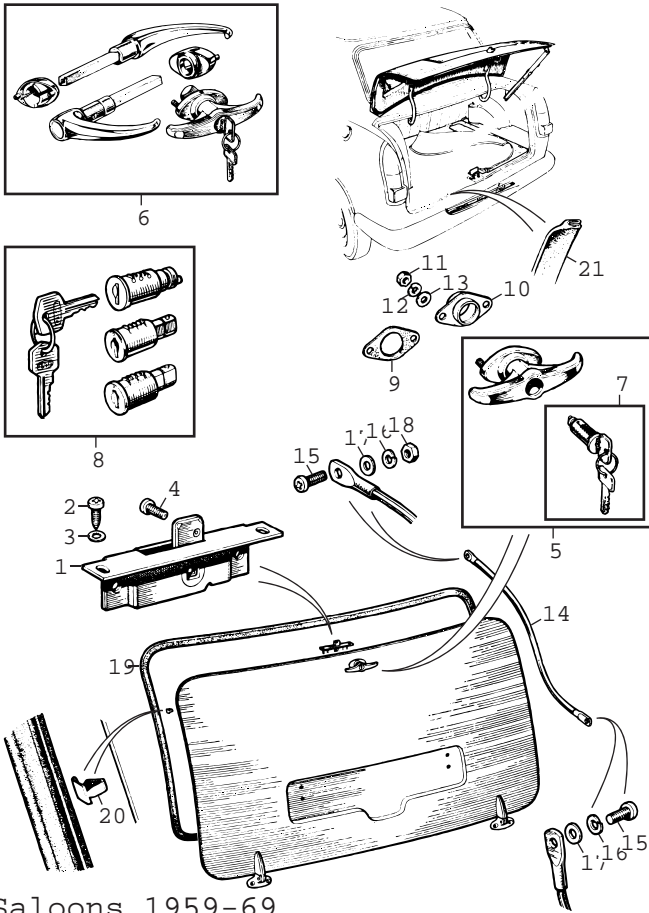
A truly bewildering number of wood kits, including fascia veneers, door cappings or both, were offered by the factory in the last eight years or so of the Mini's production life. We have not attempted to list them all here. Some are now very hard to come by, a situation not helped by the fact that Rover's veneer supplier went into administration shortly before the end of Mini production. Frantic negotiations and deals had to be done to guarantee supplies to go into the last Minis to be built, let alone manufacturing suitable stocks of spares for the years to come.

Somerford Mini Limited were fortunate (perhaps unfortunate) enough to be offered stocks of many of the wood components, and as a result can sometimes help with replacements that owners may need. However, matching new pieces of wood trim with what's already in a car is always a notoriously difficult business, so we suggest one of two methods if you are after original wood trim.

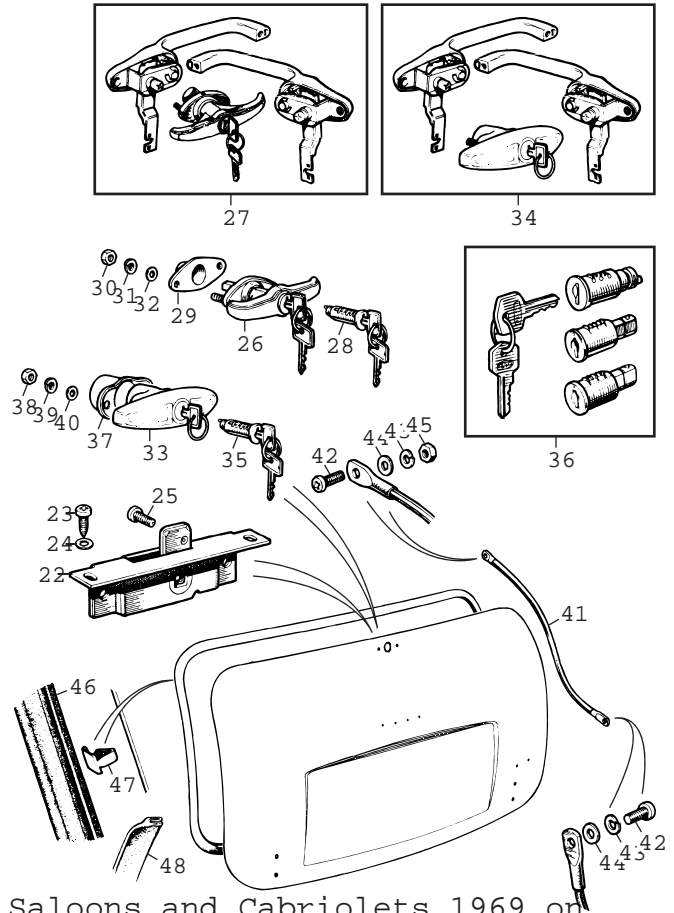
First, and the more expensive way, is to purchase a complete car set of wood trim - some of the sets are still available, so if you wish to go down this route and give us the details of your car, we will ascertain availability and price of the kit and supply it if we can.

The second method, if you can bring your car to us, is to sift through the stocks of components we have to find a suitable replacement. However, because of the variations produced, we obviously cannot guarantee that we will have a matching part. It follows then that if you want to do this it's probably better to come and see us when you need other parts for your Mini as well, to make sure you don't have a wasted journey.

Boot Lid, Rear Doors and Tailboard Locks, Glazing and Seals

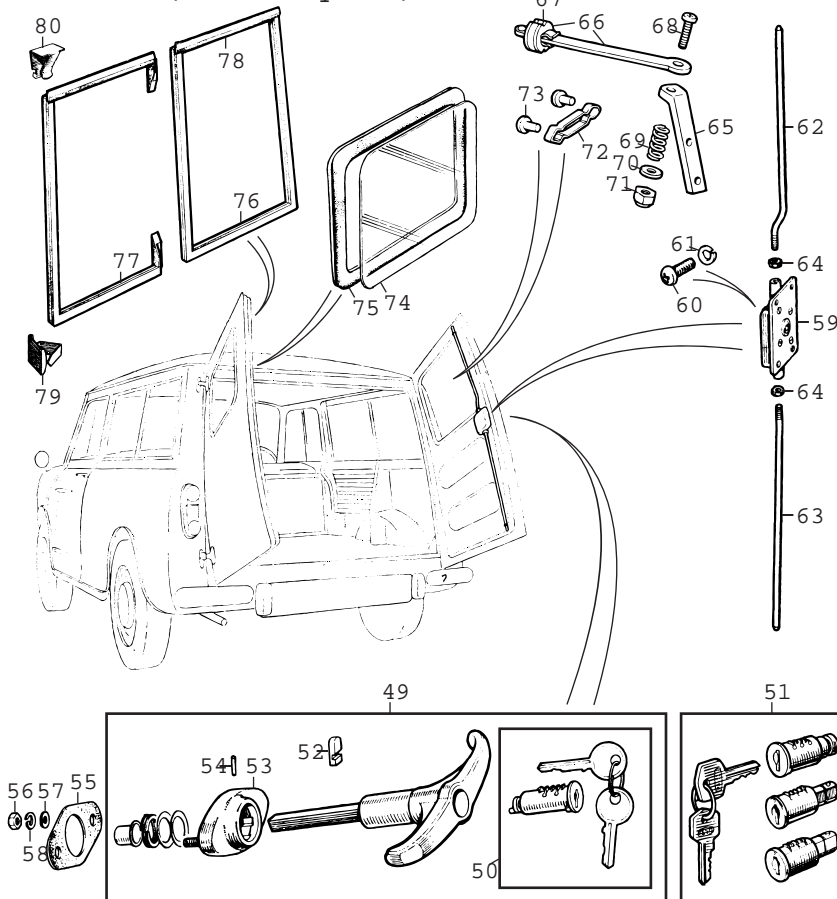


Saloons 1959-69

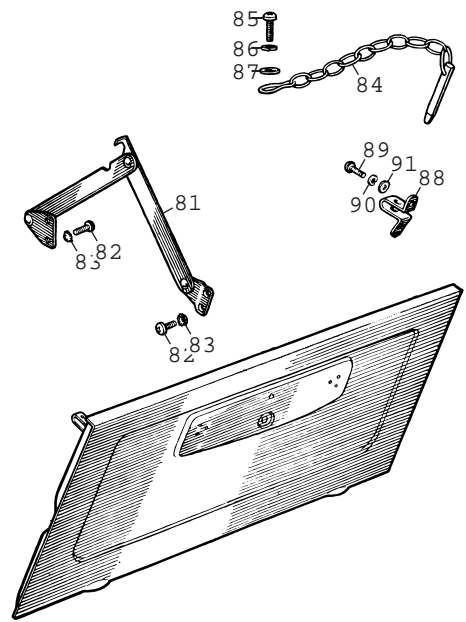


Saloons and Cabriolets 1969 on

Traveller, Countryman, Clubman Estate and Van



Pick Up



Boot Lid, Rear Doors and Tailboard Locks, Glazing and Seals

No.	Part No.	Description	Qty.	Remarks
-----	----------	-------------	------	---------

Boot Lid Locks and Fittings

Saloons, 1959-69

Most parts listed here are for Austin and Morris Mkl and Mkll models; those used on the extended boot lid of Riley and Wolseley models are unsurprisingly quite different. New boot lid locks and boot lid fittings for Riley and Wolseley models are very rarely come by these days, with the exception of the boot lid seal which is available. However, please contact us to see if we can locate any other parts you require. Please see the External Body Fittings section for details on rear number plate supports.

1	14A5696	LOCK ASSEMBLY, boot lid	1	
2	PTZ1004	SCREW, self tapping, lock to boot lid	2	
3	LWZ403	WASHER, shakeproof	2	
4	PMZ308	SCREW, lock to boot lid	2	
5	14A6582	HANDLE ASSEMBLY, lock, with two keys	1	
6	CHS003	HANDLE SET, doors and boot lid, chrome	1	1959-65; 3 piece set, with two keys.
	CHS002	HANDLE SET, doors and boot lid, chrome	1	1966-69; 3 piece set, with two keys.
7	37H9650	LOCK BARREL, handle, with two keys	1	
8	BARR002	LOCK BARREL SET, ignition switch, door and boot lid	1	3 piece set, with two keys.

For other lock barrels, lock sets and replacement keys, please see the Door Locks, Glazing and Fittings section.

9	14A1648	GASKET, handle to boot lid	1	Early Mkl models only.
10	14A8429	SEAL, rubber, handle to boot lid	1	Later Mkl and all Mkll models; may be used on early Mkls.
11	FNZ103	NUT, handle to boot lid	2	
12	WL700101	WASHER, locking	2	
13	PWZ103	WASHER, plain	2	
14	14A6740	CABLE, boot lid stay	2	
15	PMZ306	SCREW, cable to boot lid and body	4	
16	WL700101	WASHER, locking	4	
17	PWZ103	WASHER, plain	4	
18	FNZ103	NUT, cable to body	2	
19	14A6584	SEAL, boot lid to body, fixed to boot lid	1	Austin and Morris Mkl and Mkll models.
20	14A6585	CLIP, seal to boot lid	26	Austin and Morris Mkl and Mkll models.
21	ALAS464	SEAL, boot lid to body, fixed to body	1	Riley and Wolseley models.

The very earliest Riley and Wolseley models had a seal fixed with clips to the boot lid in the same manner as its Austin and Morris counterpart. This necessitated a boot lid with 28 clip holes in it - when fitting a replacement boot lid seal to one of these very early cars, RFN204 rubber plugs may be used to seal the redundant clip holes.

Saloons and Cabriolets, 1969 on

22	14A5696	LOCK ASSEMBLY, boot lid	1	
23	PTZ1004	SCREW, self tapping, lock to boot lid	2	
24	LWZ403	WASHER, shakeproof	2	
25	PMZ308	SCREW, lock to boot lid	2	

Between 1969 and the Mini run-out in 2000, exterior handles in chrome, black or grey finish were available at different times on different models. Variations from standard finish during later periods occurred because of the many limited editions which peppered later Mini production. For this reason, it would be extremely confusing to quote dates when particular finish handles were fitted. Also, note that 1969-70 models continued to use the Mkl and Mkll style handle, rather than the shape usually associated with Mklll onwards models.

26	14A6582	HANDLE ASSEMBLY, lock, with two keys	1	1969-70 models.
27	CHS001E	HANDLE SET, doors and boot lid, chrome with 14A6582 boot lid handle	1	1969-70 models; 3 piece set, with two keys.
28	37H9650	LOCK BARREL, handle, with two keys	1	1969-70 models.
29	14A8429	SEAL, rubber, handle to boot lid	1	1969-70 models.
30	FNZ103	NUT, handle to boot lid	2	1969-70 models.
31	WL700101	WASHER, locking	2	1969-70 models.
32	PWZ103	WASHER, plain	2	1969-70 models.
33	JRC2844	HANDLE ASSY., lock, with two keys, chrome	1	1970 on models.
	JRC2843	HANDLE ASSY., lock, with two keys, Black	1	1970 on models.
	JRC8182	HANDLE ASSY., lock, with two keys, Nimbus Grey	1	1970 on models.
34	CHS001	HANDLE SET, doors and boot lid, chrome with JRC2844 boot lid handle	1	1970 on models; 3 piece set, with two keys.
	HS001B	HANDLE SET, doors and boot lid, Black with JRC2843 boot lid handle	1	1970 on models; 3 piece set, with two keys.
35	ADH4492	LOCK BARREL, handle, with two keys	1	1970 on models.
36	BARR001	LOCK BARREL SET, doors and boot lid	1	1970 on models; 3 piece set, with two keys.

For other lock barrels, lock sets and keys, please see the Door Locks, Glazing and Fittings section.

37	CZH1747	SEAL, rubber, handle to boot lid	1	1970 on models.
----	---------	----------------------------------	---	-----------------

No.	Part No.	Description	Qty.	Remarks
38	FNZ103	NUT, handle to boot lid	2	1970 on models.
39	WL700101	WASHER, locking	2	1970 on models.
40	PWZ103	WASHER, plain	2	1970 on models.
41	14A6740	CABLE, boot lid stay	2	
42	PMZ306	SCREW, cable to boot lid and body	4	
43	WL700101	WASHER, locking	4	
44	PWZ103	WASHER, plain	4	
45	FNZ103	NUT, cable to body	2	
46	14A6584	SEAL, boot lid to body, fixed to boot lid	1	1969 - 1990 approx.
47	14A6585	CLIP, seal to boot lid	26	1969 - 1990 approx.
48	CKE10018	SEAL, boot lid to body, fixed to body	1	1990 approx. on.
	CKE10018P	SEAL, boot lid to body, fixed to body	1	1990 approx. on; non-genuine.

Rear Door Locks, Glazing and Fittings

Traveller, Countryman, Clubman Estate, Van

49	14A7675	HANDLE ASSY., rear door, with two keys	1	Traveller and Countryman (wooden versions).
	14A7194	HANDLE ASSY., rear door, with two keys	1	Traveller and Countryman (all-steel versions), Clubman Estate, Van.
50	37H9650	LOCK BARREL, handle, with two keys	1	
51	BARR002	LOCK BARREL SET, ignition switch, door and rear door	1	3 piece set, with two keys; Traveller, Countryman and Van up to 1969.

For other lock barrels, lock sets and keys, please see the Door Locks, Glazing and Fittings sections.

52	37H9781	BOLT, locking	1	
53	37H9782	ESCUTCHEON, handle	1	
54	AAA4737	PIN, retaining	1	
55	14A8429	SEAL, handle to door	1	
56	FNZ103	NUT, handle to door	2	
57	PWZ103	WASHER, plain	2	
58	WL700101	WASHER, locking	2	
59	EAM6891	LOCK ASSEMBLY, rear door	1	
60	PMZ308	SCREW, lock to door	4	
61	WL700101	WASHER, locking	4	
62	14A7191	LOCK ROD, upper	1	
63	14A7192	LOCK ROD, lower	1	
64	AJD8216N	NUT, lock rod securing	2	
65	14A8407	BRACKET, rear door check arm, RH	1	
	14A8408	BRACKET, rear door check arm, LH	1	
66	CZH3327	CHECK ARM ASSEMBLY, rear door	2	
67	ADA5766	BUFFER, check arm	2	Included in check arm assembly.
68	53K132	SCREW, check arm to bracket	2	
69	14A7284	SPRING, check arm	2	
70	PWZ203	WASHER, plain	2	
71	53K1420	NUT	2	
72	14G2843	SPRING, check arm guide	2	
73	RT612241	RIVET, guide spring	4	
74	14A7181	GLASS, rear door	2	
75	14A7210	GLAZING SEAL, rubber, rear door, RH	1	
	14A7211	GLAZING SEAL, rubber, rear door, LH	1	
76	14A7608	SEAL, rear door, RH	1	
77	14A7609	SEAL, rear door, LH	1	
78	37H9873M	SEAL, rear door, upper	2	Sold per metre.
79	14A6585	CLIP, seal to RH door	34	
	14A6585	CLIP, seal to LH door	23	
80	14A7610	CLIP, seal to LH door	2	

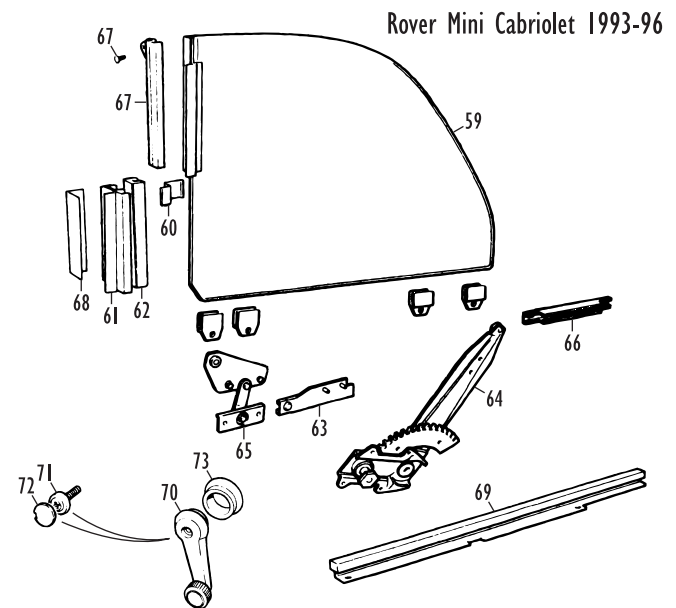
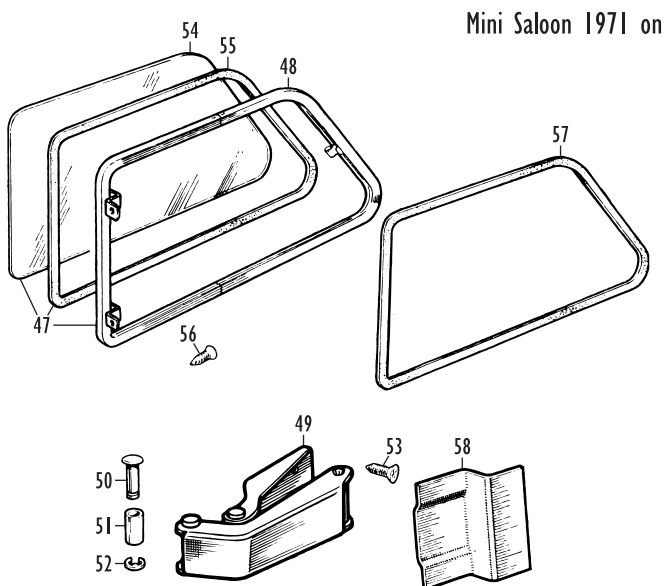
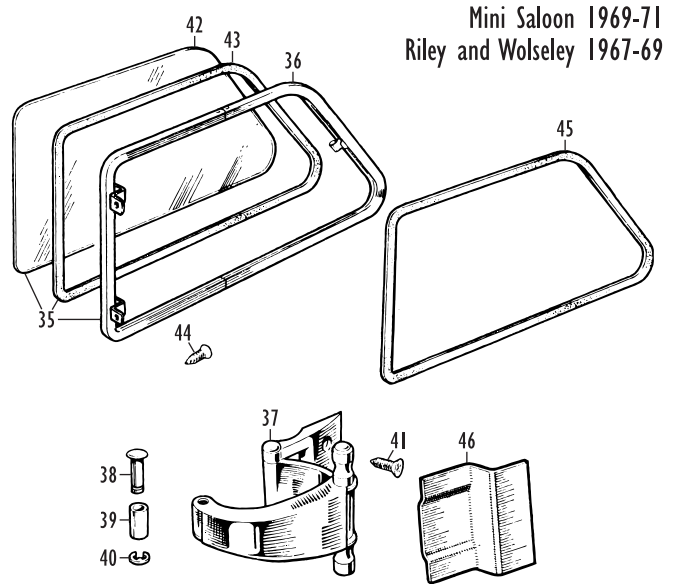
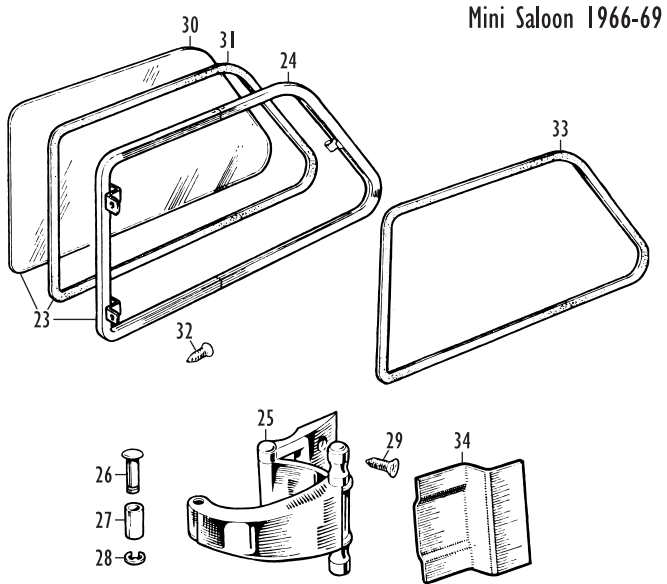
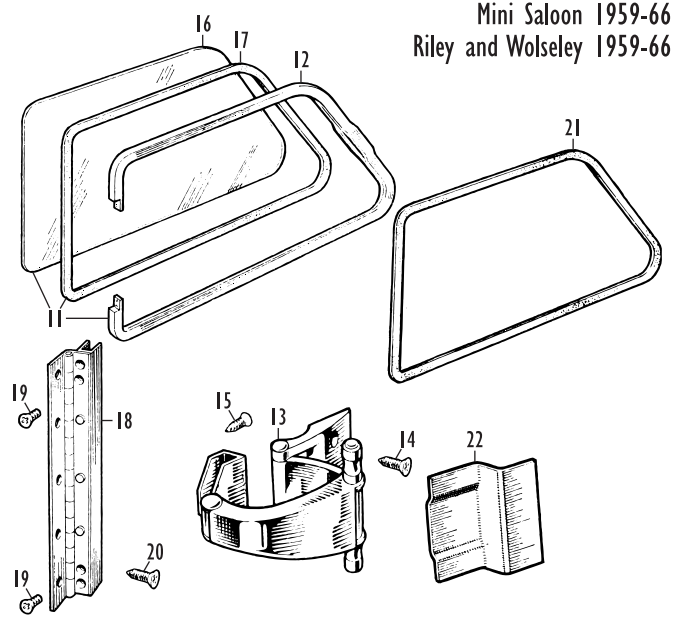
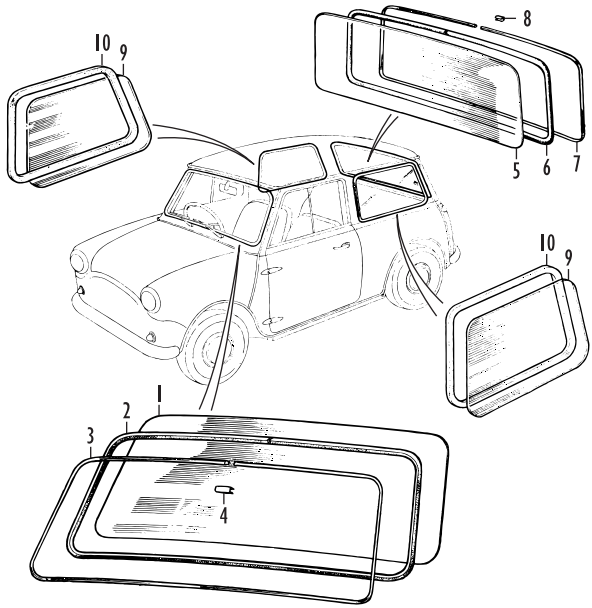
Tailboard Locks and Fittings

Pick Up

Please see the External Body Fittings section for details on rear number plate supports.

81	14A7761	STAY, tailboard, RH	1	
	14A7762	STAY, tailboard, LH	1	
82	SG604051	SCREW, stay to tailboard and body	8	
83	53K3453	WASHER, shakeproof	8	
84	14A7759	BOLT, tailboard latching, with chain	2	Also known as a key.
85	PMZ410	SCREW, pan head, bolt to body	2	
86	LWZ204	WASHER, locking	2	
87	PWZ204	WASHER, plain	2	
88	14A7760	BRACKET, tailboard bolt	2	
89	PMZ410	SCREW, pan head, bracket to tailboard	4	
90	LWZ204	WASHER, locking	4	
91	PWZ104	WASHER, plain	4	

Body Glazing - Saloon and Cabriolet



Body Glazing - Saloon and Cabriolet

Important: Please note that customers must collect window glass either directly from our premises or from our stand at one of the shows we attend. Except in special circumstances we do not supply these items by mail order. Also note that while clear or green tinted glass is widely available, you should contact us for advice on availability of the lesser-used tints of copper brown or bronze.

Windscreen

Earlier Minis were fitted with toughened glass windscreens, switching gradually to laminated as market forces (and local regulations) dictated. Today, we offer a range which even includes a heated windscreen to counter the inefficiencies of the demister. If you are converting your car to a heated windscreen, we can also supply a harness and relay kit (part no. HWWK01) to take the guesswork out of wiring it up.

No.	Part No.	Description	Qty.	Remarks
1	24A2236	GLASS, windscreen, laminated, clear	1	Up to 1996.
	CZH4048	GLASS, windscreen, laminated, green tinted	1	Up to 1996.
	CZH4048TT	GLASS, windscreen, laminated, green tinted	1	With top tint (sun strip).
	24A2236H	GLASS, windscreen, laminated, clear, heated	1	Alternative to 24A2236.
	CZH4048H	GLASS, windscreen, laminated, green, heated	1	Alternative to CZH4048.
	CMB100920	GLASS, windscreen, laminated, green tinted	1	1997 on; for stick-on interior mirror.
2	14A8743	SEAL, rubber, windscreen glass	1	For original toughened glass windscreens; will fit laminated glass.
	CCB100130	SEAL, rubber, windscreen glass, wide	1	For laminated glass windscreens and all models from 1990 approx. on.

In reality either seal can be used with laminated glass. However, if you intend to refit an original toughened windscreen, the early seal 14A8743 should be used.

3	24A734	STRIP, filler, windscreen seal, black	1	1959-79; standard models.
	37H8052F	STRIP, filler, windscreen seal, plastichrome	1	All models except 1959-79 std. models.
4	JPC2017	CLIP, joint finisher, filler strip	1	1985 on.

Backlight

5	14A7056	GLASS, backlight, clear	1	1959-67 (Mkl).
	24A2223	GLASS, backlight, clear, heated	1	1959-67 (Mkl).
	88G487	GLASS, backlight, clear	1	1967 on (Mkll onwards).
	13H7323	GLASS, backlight, clear, heated	1	1967 on (Mkll onwards).
	CZH4013	GLASS, backlight, green tinted, heated	1	1967 on (Mkll onwards).
6	14A8744	SEAL, rubber, backlight glass	1	1959-67 (Mkl).
	JRC2674	SEAL, rubber, backlight glass	1	1967 on (Mkll onwards); cut to fit Mkl.
7	24A735	STRIP, filler, backlight seal, black	1	1959-79; standard models.
	37H8052R	STRIP, filler, backlight seal, plastichrome	1	All models except 1959-79 std. models.
8	JPC2017	CLIP, joint finisher, filler strip	1	1985 on.

Fixed Rear Quarter Lights

Standard Specification Saloon Models

9	14A6824	GLASS, rear quarter light, clear	2	1959-69 (Mkl and Mkll).
	CZH1315	GLASS, rear quarter light, clear	2	1969 on (Mklll on).
	CPB101380	GLASS, rear quarter light, green tinted	2	1969 on (Mklll on).
10	JRC2673	SEAL, rubber, rear quarter light glass	2	Trim to fit for Mkl and Mkll applications.
	JRC2673P	SEAL, rubber, rear quarter light glass	2	Non-genuine.

Opening Chromed Rear Quarter Lights

Mkl Saloon Models 1959-66, Riley and Wolseley Models, 1961-66

11	24A1203	QUARTER LIGHT ASSY., clear glass, RH	1	
	24A1204	QUARTER LIGHT ASSY., clear glass, LH	1	
12	17H3725	FRAME, quarter light	2	
13	47H9501	CATCH ASSEMBLY, RH	1	
	47H9500	CATCH ASSEMBLY, LH	1	
14	RTP604	SCREW, catch to rear pillar bracket	4	
15	CMZ04	SCREW, catch to quarter light frame	4	
16	24A603	GLASS, quarter light, clear	2	
17	47H9535M	RUBBER, glazing	A/R	Sold per metre.
18	24A684	HINGE, quarter light	2	
19	CMZ04	SCREW, hinge to quarter light frame	8	
20	CTP604	SCREW, self tapping, hinge to B post	10	
21	ALAS897	SEAL, rubber, quarter light to body	2	Cut to fit.
22	14A7775	CATCH BRACKET, rear pillar	2	Weld to rear pillars.

Opening Stainless Rear Quarter Lights

Mkl and Mkll Saloon Models 1966-69

23	ALA7938	QUARTER LIGHT ASSY., clear glass, RH	1	
	ALA7939	QUARTER LIGHT ASSY., clear glass, LH	1	
24	ALA7940	FRAME, quarter light, RH	1	
	ALA7941	FRAME, quarter light, LH	1	
25	24A2132	CATCH ASSEMBLY, RH	1	
	24A2133	CATCH ASSEMBLY, LH	1	
26	24A2135	PIN, catch pivot	2	
27	24A2134	TUBE, bearing	2	
28	13H2899	CIRCLIP, pin securing	2	
29	RTP604	SCREW, catch to rear pillar bracket	4	

No.	Part No.	Description	Qty.	Remarks
30	24A2130	GLASS, quarter light, clear	2	
31	47H9535M	RUBBER, glazing	A/R	Sold per metre.
32	36036K	SCREW, quarter light tab to B post	4	
33	ALAS897	SEAL, rubber, quarter light to body	2	Cut to fit.
34	14A7775	CATCH BRACKET, rear pillar	2	Weld to rear pillars.

Opening Stainless Rear Quarter Lights

Saloon Models 1969-71 approx.; Riley and Wolseley Models, 1967-69

35	ALA7946	QUARTER LIGHT ASSY., clear glass, RH	1	
	ALA7947	QUARTER LIGHT ASSY., clear glass, LH	1	
36	ALA8256	FRAME, quarter light, RH	1	
	ALA8257	FRAME, quarter light, LH	1	
37	24A2132	CATCH ASSEMBLY, RH	1	
	24A2133	CATCH ASSEMBLY, LH	1	
38	24A2135	PIN, catch pivot	2	
39	24A2134	TUBE, bearing	2	
40	13H2899	CIRCLIP, pin securing	2	
41	RTZ604	SCREW, catch to rear pillar bracket	4	
42	CZH3541	GLASS, quarter light, clear	2	
43	47H9535M	RUBBER, glazing	A/R	Sold per metre.
44	36036K	SCREW, quarter light tab to B post	4	
45	ALAS897	SEAL, rubber, quarter light to body	2	
46	14A7775	CATCH BRACKET, rear pillar	2	Weld to rear pillars.

Opening Stainless Rear Quarter Lights

Saloon Models 1971 approx. On

Black quarter light frames used on a few 1990s Minis are not available; all listed frames have the usual stainless bright finish. Some 1970s models had quarter light seals coloured to match the trim; please contact us concerning a availability.

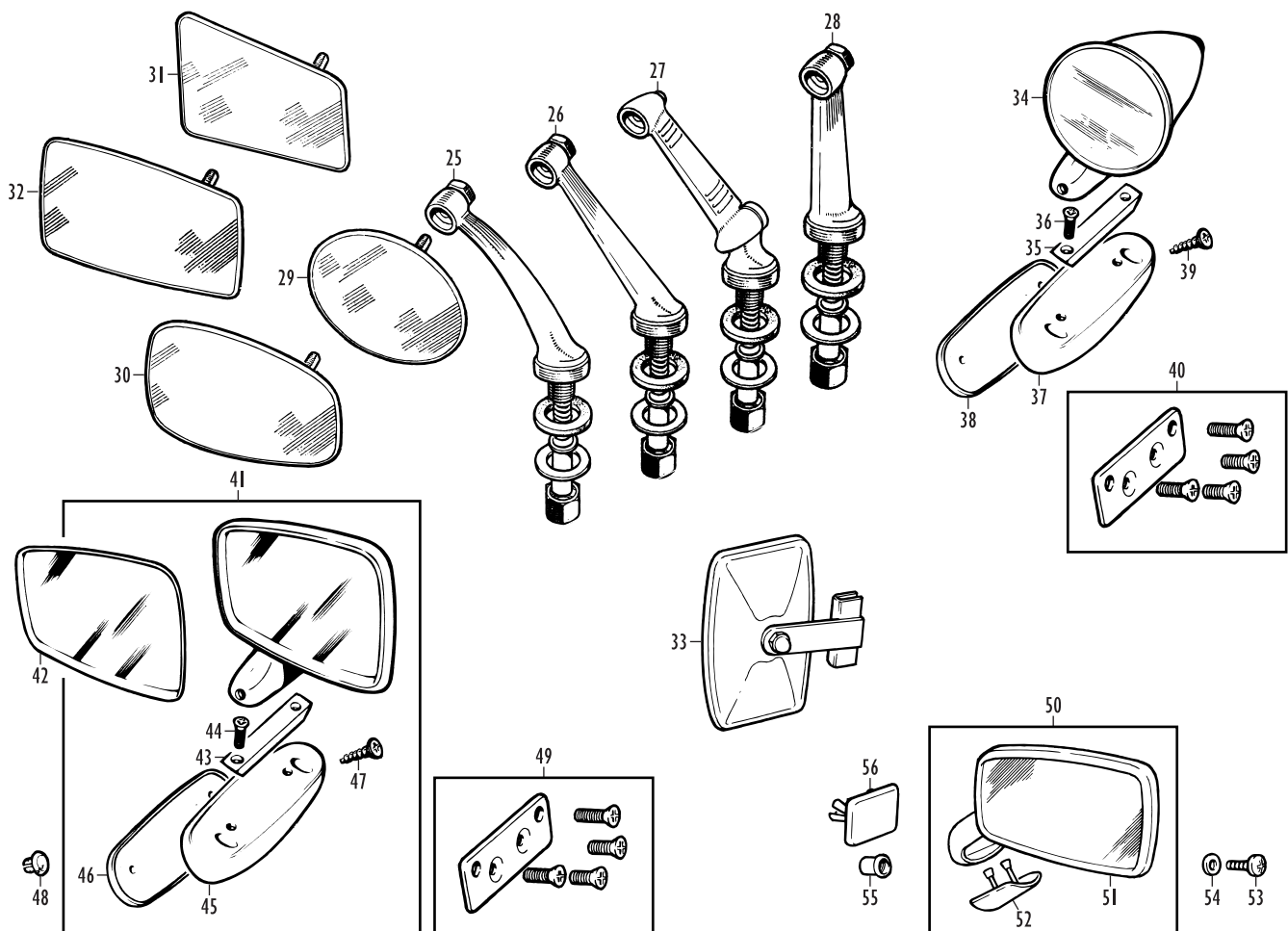
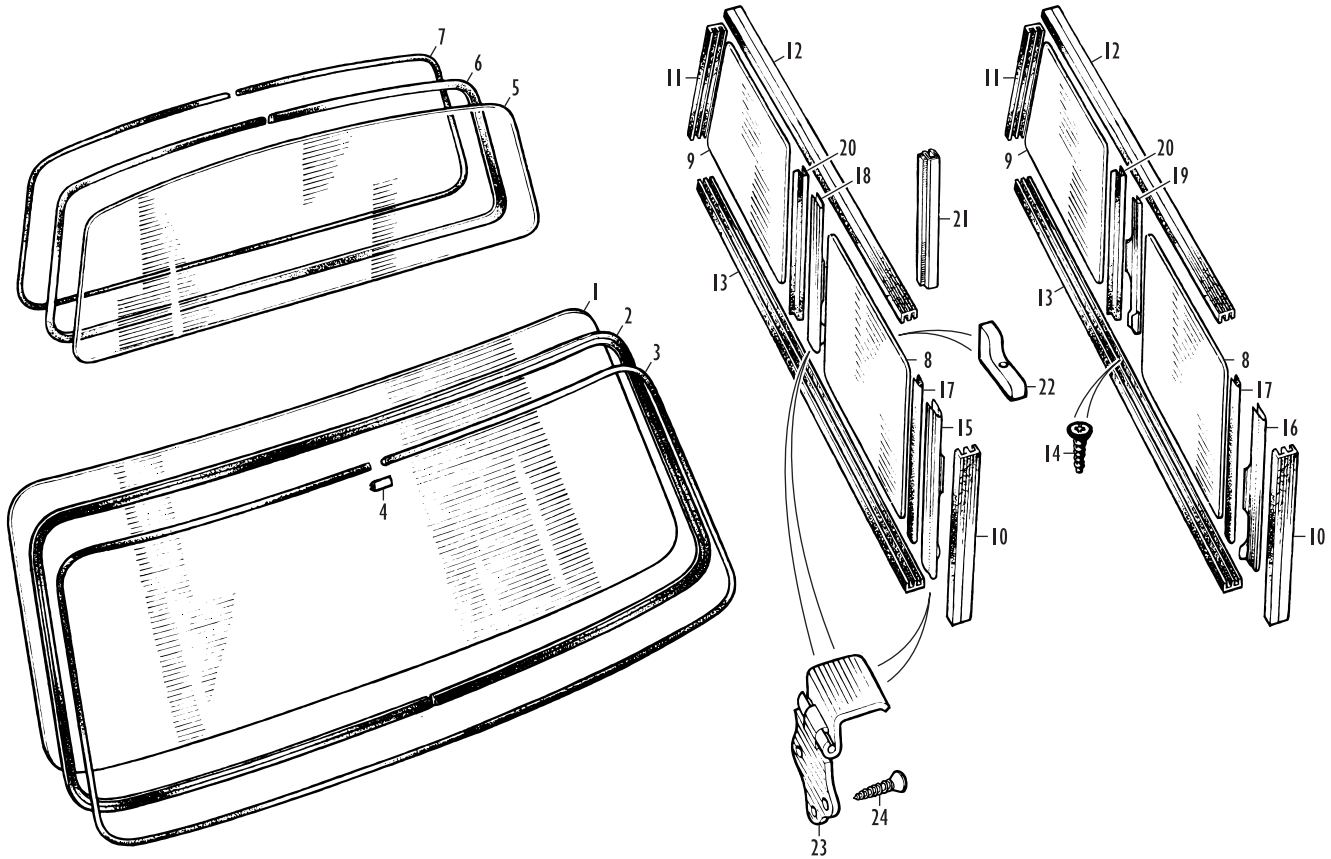
47	CZH3522	QUARTER LIGHT ASSY., clear glass, RH	1	
	CZH3523	QUARTER LIGHT ASSY., clear glass, LH	1	
	CZH4010	QUARTER LIGHT ASSY., green tinted, RH	1	
	CZH4011	QUARTER LIGHT ASSY., green tinted, LH	1	
48	CZH3537	FRAME, quarter light, RH	1	
	CZH3538	FRAME, quarter light, LH	1	
49	CZH3535	CATCH ASSEMBLY, RH	1	
	CZH3536	CATCH ASSEMBLY, LH	1	
50	CZH3527	PIN, catch pivot	2	
51	CZH3542	TUBE, bearing	2	
52	13H2899	CIRCLIP, pin securing	2	
53	PTZ604	SCREW, catch to rear pillar bracket	4	
54	JRC5142	GLASS, quarter light, clear	2	
	JRC5143	GLASS, quarter light, green tinted	2	
55	47H9535M	RUBBER, glazing	A/R	Sold per metre.
56	36038Z	SCREW, quarter light tab to B post	4	
57	PAM1019	SEAL, rubber, quarter light to body, black	2	Cut to fit.
58	14A7775	CATCH BRACKET, rear pillar	2	If required; weld to rear pillars.

Rear Quarter Lights

Rover Mini Cabriolet, 1993-96

59	CPD10058	GLASS, rear quarter, green tinted, RH	1	
	CPD10059	GLASS, rear quarter, green tinted, LH	1	
60	CFT100140	CLIP, quarter light	2	
61	CGC10020	CHANNEL, glass run	2	
62	CGE10062	SEAL, glass run channel	2	
63	CVE100100	CHANNEL, glass guide, RH	1	
	CVE100110	CHANNEL, glass guide, LH	1	
64	CVH10090	REGULATOR, glass, RH	1	
	CVH10091	REGULATOR, glass, LH	1	
65	CVF10024	PLATE, regulator mounting, RH	1	
	CVF10025	PLATE, regulator mounting, LH	1	
66	CVF100280	PLATE, regulator, RH	1	
	CVF100290	PLATE, regulator, LH	1	
67	CFE101340PMA	SEAL, glass, RH	1	
	CFE101350PMA	SEAL, glass, LH	1	
68	CZE100010	STRIP, anti-rattle, rear quarter inner	2	
69	DDF10052	FINISHER, lower, rear quarter outer	2	
70	YXX3199LOY	HANDLE, regulator, Granite	2	
	YXX3199LNF	HANDLE, regulator, Ash Grey	2	
	FVL100030	HANDLE, regulator, burr walnut	2	Alternative.
71	ADU8081	SCREW, handle to regulator	2	
72	YXX3200LOY	PLUG, handle, Granite	2	
	YXX3200LNF	PLUG, handle, Ash Grey	2	
73	CZH701LOY	BEZEL, handle, Granite	2	
	CZH701LNF	BEZEL, handle, Ash Grey	2	

Body Glazing - Estates, Van and Pick Up; Exterior Mirrors



Body Glazing - Estates, Van and Pick Up; Exterior Mirrors

Important: Please note that customers must collect window glass either directly from our premises or from our stand at one of the shows we attend. Except in special circumstances we do not supply these items by mail order. Also note that while clear or green tinted glass is widely available, you should contact us for advice on availability of the lesser-used tints of copper brown or bronze.

Windscreen

Earlier Minis were fitted with toughened glass windscreens, switching gradually to laminated as market forces (and local regulations) dictated. Today, we offer a range which even includes a heated windscreen to counter the inefficiencies of the demister - highly recommended, particularly for Pick Ups which have the worst ventilation system of all Minis. If you are converting your car to a heated windscreen, we can also supply a harness and relay kit (part no. HWWK01) to take the guesswork out of wiring it up.

No.	Part No.	Description	Qty.	Remarks
1	24A2236	GLASS, windscreen, laminated, clear	1	
	CZH4048	GLASS, windscreen, laminated, green tinted	1	
	CZH4048TT	GLASS, windscreen, laminated, green tinted	1	With top tint (sun strip).
	24A2236H	GLASS, windscreen, laminated, clear, heated	1	Alter native to 24A2236.
	CZH4048H	GLASS, windscreen, laminated, green, heated	1	Alter native to CZH4048.
2	14A8743	SEAL, rubber, windscreen glass	1	For original toughened glass windscreens; will fit laminated glass.
	CCB100130	SEAL, rubber, windscreen glass, wide	1	For laminated glass windscreens.
In reality either seal can be used with laminated glass. However, if you intend to refit an original toughened windscreen, the early seal 14A8743 should be used.				
3	37H8052F	STRIP, filler, windscreen seal, plastichrome	1	Except 1961-79 Van and Pick Up.
	24A734	STRIP, filler, windscreen seal, black	1	1961-79, Van and Pick Up.
4	JPC2017	CLIP, joint finisher, filler strip	1	Later saloon part can be used to tidy up the filler strip joint.

Backlight

Pick Up

5	14A7768	GLASS, backlight, clear	1	
6	14A9362	SEAL, rubber, backlight glass	1	
7	14A9363	STRIP, filler, backlight seal, black	1	

Sliding Rear Quarter Lights

Traveller, Countryman and Clubman Estate

8	14A7627	GLASS, sliding quarter light, front, clear	2	
	CZH4086	GLASS, sliding quarter light, front, green tinted	2	
9	14A7628	GLASS, sliding quarter light, rear, clear	2	
	CZH4085	GLASS, sliding quarter light, rear, green tinted	2	
	CECK001	CHANNEL KIT, glazing	1	Car set of 8 channels.
10	14A7631	CHANNEL, glazing, front	2	
11	14A7630	CHANNEL, glazing, rear	2	
12	14A7632	CHANNEL, glazing, upper	2	
13	14A7633	CHANNEL, glazing, lower	2	
14	CTZ404	SCREW, channel to body	24	
15	14A7639	FINGER PULL, sliding glass, front, RH	1	
16	14A7640	FINGER PULL, sliding glass, front, LH	1	
17	24A948	SEAL, front finger pull	2	
18	14A7635	FINGER PULL, sliding glass, rear, RH	1	1960-73.
19	14A7636	FINGER PULL, sliding glass, rear, LH	1	1960-73.
20	14A7637	SEAL, rear finger pull	2	1960-73.
21	EAM8530/1	DRAUGHT EXCLUDER, fixed glass, rear	2	1973 on.
22	CZH940	STOP, fixed glass	2	1973 on.
23	14A7638	CATCH, sliding quarter light	4	1960-68.
	24A2391	CATCH, sliding quarter light	4	1968 on.
24	36036K	SCREW, catch to body	12	

Exterior Mirrors

'Tex' Style Wing Mirrors, 1959-69 Period

Saloon, Traveller, Countryman, Van and Pick Up

25	M16008	STEM ASSEMBLY, wing mirror, curved	2	
26	M16009	STEM ASSEMBLY, wing mirror, offset	2	
27	M16006	STEM ASSEMBLY, wing mirror, adjustable	2	
28	M16007	STEM ASSEMBLY, wing mirror, straight	2	
29	M50101	MIRROR HEAD, round	2	
30	M50211	MIRROR HEAD, oval	2	
31	M50311	MIRROR HEAD, tapered	2	
32	M40711	MIRROR HEAD, rectangular	2	

Overtaking Mirror, 1959-69 Period

A very popular period accessory, mounting to the body seam finisher on the windscreen pillar.

33	OTM001	OVERTAKING MIRROR ASSEMBLY	1	
----	--------	----------------------------	---	--

No. Part No. Description Qty. Remarks

'Bullet' Style Racing Mirrors, 1965 Onwards

Superior quality adjustable 'Bullet' style mirrors, designed for door fitment. Each includes mounting plinth and fixings. Frequently used as a retro-fit to late model Minis.

34	GAM105R	BULLET MIRROR ASSY, plinth mounted, RH	1	
	GAM105L	BULLET MIRROR ASSY, plinth mounted, LH	1	
35	DZB5208A	PLATE, wedge, mirror mounting	2	
36	SM105161	SCREW, wedge plate to plinth	4	
37	CZH3521	PLINTH, mirror, bright finish	2	
38	CZH3525	GASKET, plinth to door, plastic	2	
39	CMZ312	SCREW, plinth to door	4	
40	GAM215KIT	ADAPTOR KIT, 'Bullet' mirror, RH	1	
	GAM216KIT	ADAPTOR KIT, 'Bullet' mirror, LH	1	

These adaptor kits allow fitment of 'Bullet' mirrors to the nutserts in in the doors on post-1980 cars.

'Tex' Door Mirrors, 1969-84 Period

Saloon, Clubman Estate, Van and Pick Up

A very popular style of mirror, often retro-fitted to later 1980s and 1990s models (see adaptor kits below for this application).

41	GAM215A	DOOR MIRROR ASSEMBLY, RH, bright finish	1	Saloon and Clubman Estate, 1969-79.
	GAM216A	DOOR MIRROR ASSEMBLY, LH, bright finish	1	Saloon and Clubman Estate, 1969-79.
	GAM250	DOOR MIRROR ASSEMBLY, RH, black finish	1	Van and Pick Up, 1976 on.
	GAM251	DOOR MIRROR ASSEMBLY, LH, black finish	1	Van and Pick Up, 1976 on.
42	M97712Q	MIRROR GLASS, replacement	2	
43	DZB5208A	PLATE, wedge, mirror mounting	2	
44	SM105161	SCREW, wedge plate to plinth	4	
45	CZH3521	PLINTH, mirror, bright finish	2	Saloon and Clubman Estate, 1969-79.
	CZH4174	PLINTH, mirror, black finish	2	Van and Pick Up, 1976 on.
46	CZH3525	GASKET, plinth to door, plastic	2	
47	CMZ312	SCREW, plinth to door	4	
48	I3H8998	PLUG, blanking mirror mounting hole	4	For unused mounting holes in doors.
49	GAM215KIT	ADAPTOR KIT, 'Tex' mirror, RH	1	
	GAM216KIT	ADAPTOR KIT, 'Tex' mirror, LH	1	

These adaptor kits allow fitment of 'Tex' mirrors to the nutserts included in the doors on post-1980 cars.

'Magna' Door Mirrors, 1980 On

Saloon, Cabriolet and Clubman Estate

50	JPC9848	DOOR MIRROR ASSY, RH, Black	1	1980-88.
	JPC9849	DOOR MIRROR ASSY, LH, Black	1	1980-88.
	JPC9836	DOOR MIRROR ASSY, RH, Nimbus Grey	1	1988-96, plus earlier limited editions.
	JPC9837	DOOR MIRROR ASSY, LH, Nimbus Grey	1	1988-96, plus earlier limited editions.
	CDM001	DOOR MIRROR ASSY, RH, chrome finish	1	Aftermarket alternative.
	CDM002	DOOR MIRROR ASSY, LH, chrome finish	1	Aftermarket alternative.
	CRB10184	DOOR MIRROR ASSY, RH, colour coded	1	1997 on, plus limited editions 1989-96.
	CRB10185	DOOR MIRROR ASSY, LH, colour coded	1	1997 on, plus limited editions 1989-96.

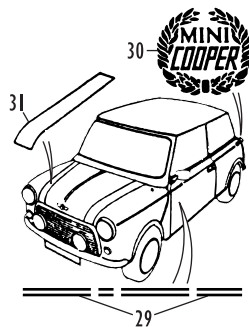
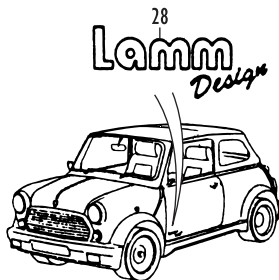
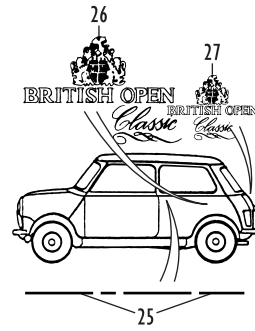
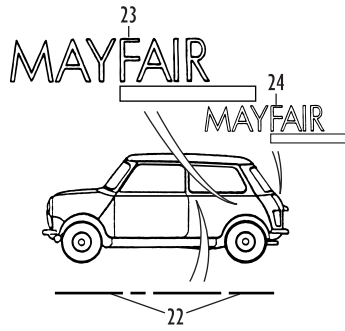
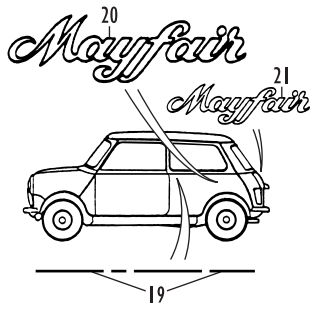
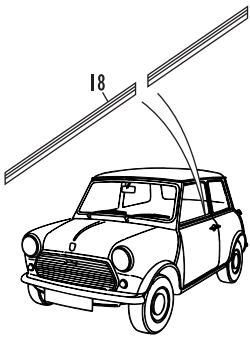
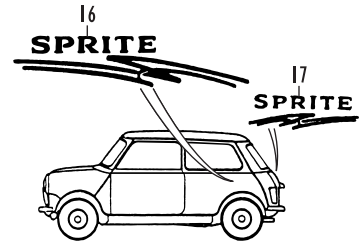
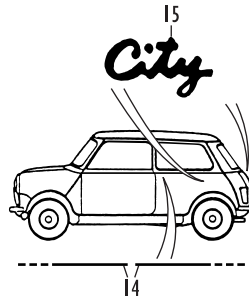
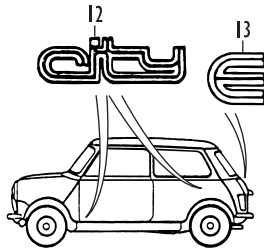
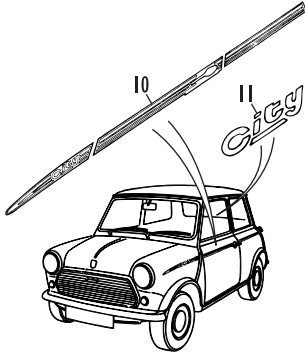
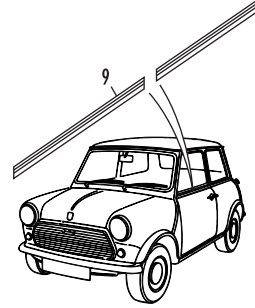
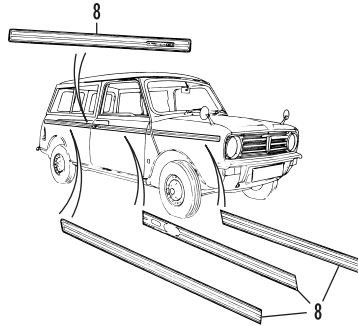
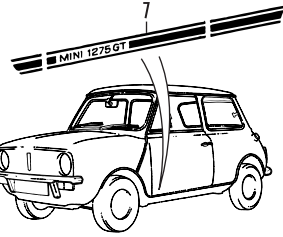
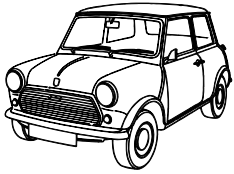
CRB10184 and CRB10185 are mirrors with heads painted the same colour as the car, except for Cooper models which had White Diamond mirrors up to 1999, then a choice of Old English White or Platinum Silver, depending on the roof colour of the car. The mirror stems on coloured mirrors were always black.

Important note: to order CRB10184 or CRB10185 mirrors, the correct three character colour suffix must be applied to the part number. For example, a right hand mirror in Cherry Red would be CRB10184COG, where COG is the colour suffix or code. To confirm your colour, look at the vehicle identification number (VIN) plate under the bonnet - it displays the colour code of your car. Unsurprisingly, we do not hold all the colours as normal stock items, only the more common colours such as the white Cooper mirrors. Please contact us to be advised on the availability of your mirror colour.

Colours used (with part no. suffixes in brackets) are, in approximate order of introduction from 1989 on: Cherry Red (COG), Black (PMF), Flame Red (COF), British Racing Green (HNA), Midnight Blue (JQW), Storm Grey (LOZ), White Diamond (NMN), Caribbean Blue (UME), Cranberry Red (COS), Nightfire (COQ), Electric Blue (JSA), White Diamond 2 (NAL), Brooklands Green (HYF), Hawaiian Blue (JFK), Anthracite (LQW), Solar Red (CMU), Black 2 (PAK), British Racing Green 2 (HAM), Nightfire Red 2 (CAQ), Platinum Silver (MNX), Tahiti Blue (JRJ), Almond Green (HAK), Volcano (EAC), Whitehall Beige (SAR), Amaranth (KMN), Kingfisher Blue (JAX), Surf Blue (JEN), Yukon Grey (LOS), Paul Smith Blue (JYX), Old English White (NUD), Mulberry Red (CDM), Island Blue (JFU), Old English White (NNX), Sienna Gold (GUF), British Racing Green 3 (HFF).

51	JPC8398PA	STEM, mirror, RH, Black	1	
	JPC8399PA	STEM, mirror, LH, Black	1	
	JPC8410LP	STEM, mirror, RH, Nimbus Grey	1	
	JPC8411LP	STEM, mirror, LH, Nimbus Grey	1	
52	EAM4158PA	COVER, stem, RH, Black	1	
	EAM4159PA	COVER, stem, LH, Black	1	
	JPC8414LP	COVER, stem, RH, Nimbus Grey	1	
	JPC8415LP	COVER, stem, LH, Nimbus Grey	1	
53	PMZ310	SCREW, mirror to door	4	
54	PWZ103	WASHER, plain	4	
55	ADU2038	NUTSERT, door skin, mirror mounting	4	
56	EAM7976	PLUG, blanking mounting holes, RH	1	For unused mounting holes in doors.
	EAM7977	PLUG, blanking mounting holes, LH	1	For unused mounting holes in doors.

Body Decals and Stripes - Mainstream Models



Body Decals and Stripes - Mainstream Models

No.	Part No.	Description	Qty.	Remarks
Non-Model Specific Decals				
1	ST153	DECAL, shield, 'BL Special Tuning'	A/R	
2	ST298	DECAL, rosette, 'BMC'	A/R	
	TR204	TRANSFER, rosette, 'BMC'	A/R	Affix inside window.
	TR208	TRANSFER, rosette, 'BMC'	A/R	Affix to body.
3	TR206	TRANSFER, rosette, 'Safety Fast'	A/R	Affix inside window.
	TR205	TRANSFER, rosette, 'Safety Fast'	A/R	Affix to body.
4	TR220	TRANSFER, rosette, 'Special Tuning'	A/R	Affix inside window.
	TR207	TRANSFER, rosette, 'Special Tuning'	A/R	Affix to body.
5	DAF105090NMN	ROOF DECAL KIT, chequered, white squares	1	
	DAF105090PMA	ROOF DECAL KIT, chequered, black squares	1	
6	DAF105120	ROOF DECAL KIT, Union Flag	1	

Mainstream Models

(Includes limited editions which evolved into mainstream models)

Decals and stripes applied at the factory to new Minis were very prolific, especially from the early 1980s onwards. It is not commercially possible to cover each and every variation (particularly in the case of limited editions - please see the next section for these). As a result, decals and stripes for less common mainstream models such as the Clubman GT and GTS (South Africa and Australia), Mini Special (Europe, 1988 on) and Mini Sprite (Japan, pre-and post-1988 models) are not listed here.

However, if you have one of these models, please contact us, giving as much detail and information as possible and it may just be that we can source the decal or stripe you are after, somehow.

Note that limited editions which evolved unofficially into mainstream are listed here (e.g. the British Open Classic). However, the Rover Special Products Cooper model and the Classic 2000 models (Seven, Knightsbridge, Cooper and Cooper Sport) were always limited editions and are in the next section.

Striping kits are available as car sets only, due to the problems in matching colours with those that have weathered over the years on a car. Coachlines are usually also sold in car sets; where this is not the case, it will state clearly in the text.

1275 GT 1969-80

7	18G9044	STRIPE KIT, car set, '1275 GT', Black	1	
	18G9050	STRIPE KIT, car set, '1275 GT', White	1	
	18G9043	STRIPE KIT, car set, '1275 GT', Flame red	1	
	18G9046	STRIPE KIT, car set, '1275 GT', Midnight Blue	1	
	18G9049	STRIPE KIT, car set, '1275 GT', Yellow	1	
	18G9045	STRIPE KIT, car set, '1275 GT', Prune	1	
	18G9047	STRIPE KIT, car set, '1275 GT', Blaze	1	
	18G9048	STRIPE KIT, car set, '1275 GT', Limeflower	1	
	CHM73	STRIPE KIT, car set, '1275 GT', Gold	1	
	CHM74	STRIPE KIT, car set, '1275 GT', Saddle	1	
	GTSS001	STRIPE KIT, car set, '1275 GT', Silver	1	

Clubman Estate 1976 on

8	CESK001	STRIPE KIT, car set, Amber (bronze)	1	
	CESK002	STRIPE KIT, car set, Kelp (gold)	1	
	CESK003	STRIPE KIT, car set, Metallic Blue	1	

1000 1977-80

9	44E4372/4	COACHLINE, double, car set, Gold	1	
	44E3913/21	COACHLINE, double, car set, Saddle	1	

City 1976-82

10	YGA1074/81	STRIPE KIT, car set, 'City', Black	1	
	YGX1074/81BK	STRIPE KIT, car set, 'City', Cream	1	
11	YGA1082	DECAL, boot lid, 'City', Black	1	
	YGX1082BK	DECAL, boot lid, 'City', Cream	1	

City 1983-88

12	YXX3699BV	DECAL, lower door or body side, 'City', Vellum	2	
	YXX3699LP	DECAL, lower door or body side, 'City', Nimbus Grey	2	
	YXX3699MG	DECAL, lower door or body side, 'City', Silver	2	
	YXX3699GE	DECAL, lower door or body side, 'City', Gold	2	
13	YXX4153BV	DECAL, boot lid, 'E', Vellum	1	
	YXX4153LP	DECAL, boot lid, 'E', Nimbus Grey	1	
	YXX4153MG	DECAL, boot lid, 'E', Silver	1	
	YXX4153GE	DECAL, boot lid, 'E', Gold	1	

City 1988-92

14	DAE10026UMD	COACHLINE, single, Turquoise	2	One required per side.
----	-------------	------------------------------	---	------------------------

15	DAF10105UMD	DECAL, body side and boot lid, 'City', Turquoise	3	
----	-------------	--	---	--

Sprite 1992-96

16	DAF10392RGP	DECAL, body side, RH, 'Sprite', mauve/green	1	
	DAF10393RGP	DECAL, body side, LH, 'Sprite', mauve/green	1	
17	DAF10389RGP	DECAL, boot lid, 'Sprite', mauve and green	1	

HL and HLE 1980-84

18	GZF243	COACHLINE, double, Slate Grey (light)	A/R	Sold per metre.
	GZF244	COACHLINE, double, Vellum	A/R	Sold per metre.
	DAE10138LMP	COACHLINE, double, Nimbus Grey (dark)	A/R	Sold per metre.
	DAE10108GME	COACHLINE, double, Gold	A/R	Sold per metre.
	DAE10109MMG	COACHLINE, double, Silver	A/R	Sold per metre.

Mayfair 1982-88

19	JRC2679PMA	COACHLINE, single, Black	A/R	Sold per metre.
	DAE10081LMP	COACHLINE, single, car set, Nimbus Grey	1	
	DAE10081MMG	COACHLINE, single, car set, Silver	1	
	JRC2679NMN	COACHLINE, single, White	A/R	Sold per metre.
	DAE10081GME	COACHLINE, single, car set, Gold	1	
20	JRC2678PMA	DECAL, body side, 'Mayfair', Black	1	
	JRC2678LP	DECAL, body side, 'Mayfair', Nimbus Grey	1	
	JRC2678MG	DECAL, body side, 'Mayfair', Silver	1	
	JRC2678NMN	DECAL, body side, 'Mayfair', White	1	
	JRC2678GE	DECAL, body side, 'Mayfair', Gold	1	
21	JRC2676PMA	DECAL, boot lid, 'Mayfair', Black	1	
	JRC2676LP	DECAL, boot lid, 'Mayfair', Nimbus Grey	1	
	JRC2676MG	DECAL, boot lid, 'Mayfair', Silver	1	
	JRC2676NMN	DECAL, boot lid, 'Mayfair', White	1	
	JRC2676GE	DECAL, boot lid, 'Mayfair', Gold	1	

Mayfair 1988-96

22	DAE10081MMG	COACHLINE, single, car set, Silver	1	
	DAE10081LNS	COACHLINE, single, car set, Advantage Grey	1	
23	DAF10123RVK	DECAL, body side, 'Mayfair', Silver and Navy	2	1988-92.
	DAF10123RVL	DECAL, body side, 'Mayfair', Silver and Green	2	1988-92.
	DAF10123RVM	DECAL, body side, 'Mayfair', Advantage Grey and Green	2	1988-92.
24	DAF10104RVK	DECAL, boot lid, 'Mayfair', Silver and Navy	1	1988-92.
	DAF10104RVL	DECAL, boot lid, 'Mayfair', Silver and Green	1	1988-92.
	DAF10104RVM	DECAL, boot lid, 'Mayfair', Advantage Grey and Green	1	1988-92.

British Open Classic

Originally a limited edition officially dating from 1992, cars pretty well equating to the specification and sometimes even badged as British Open Classic were produced sporadically for the next couple of years.

25	DAE10081GME	COACHLINE, single, car set, Gold	1	
26	DAF10407RHE	DECAL, body side, Gold and Green	2	
	DAF10407RHX	DECAL, body side, Black and Gold	2	
	DAF10407RBK	DECAL, body side, Gold and Charcoal	2	
27	DAF10406RHE	DECAL, boot lid, Gold and Green	1	
	DAF10406RHX	DECAL, boot lid, Black and Gold	1	
	DAF10406RBK	DECAL, boot lid, Gold and Charcoal	1	

Lamm Cabriolet

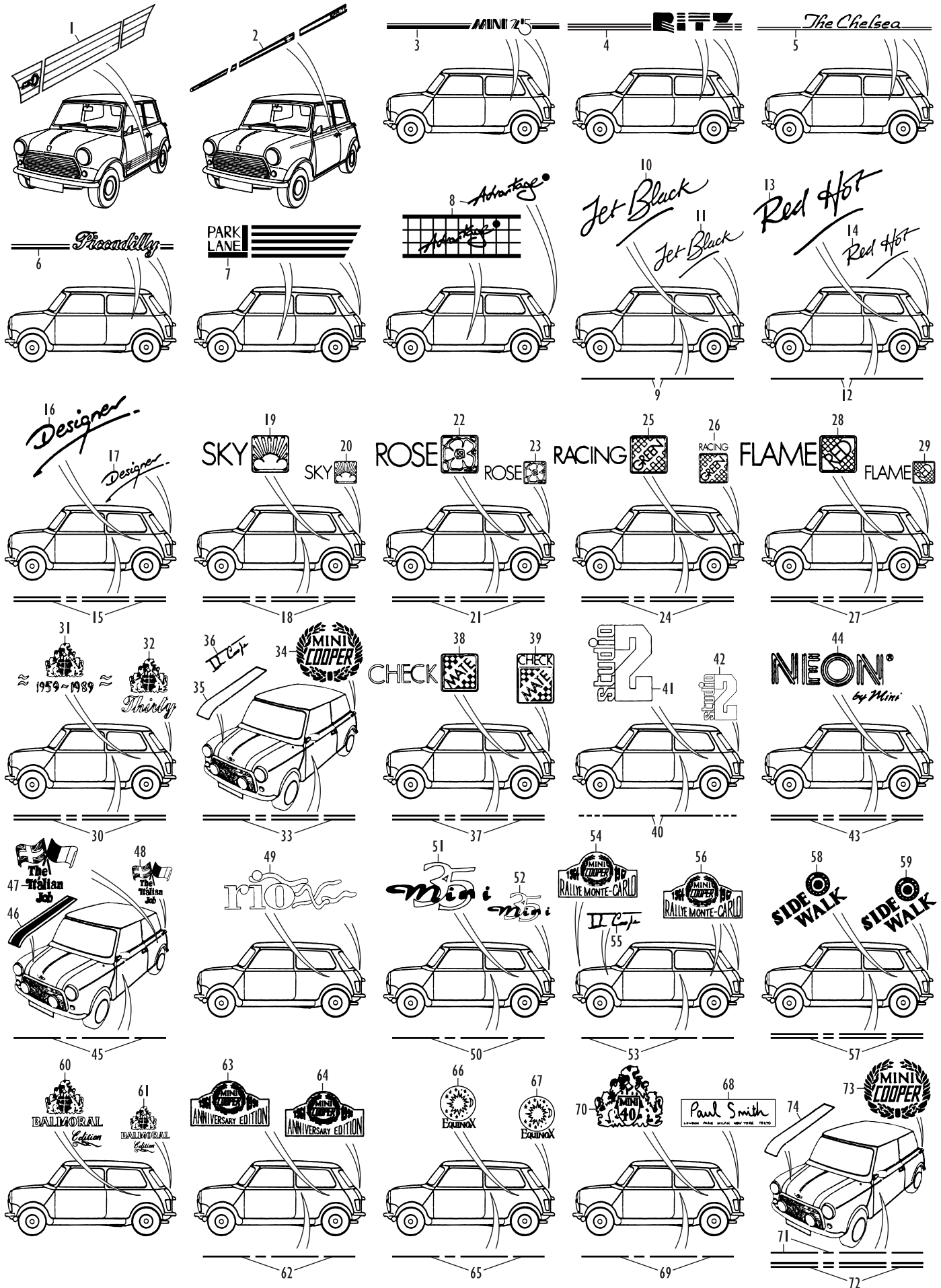
28	DAF10396CPG	DECAL, lower doors, 'Lamm Design'	2	
----	-------------	-----------------------------------	---	--

Cooper

Note: for silver variants of coachlines decals and stripes, see the Classic 2000 model in the 'Body Decals and Stripes - Limited Editions' section. For 'John Cooper' bonnet stripe signatures, see the Cooper SE (Rover Special Products) model, also in the same section.

29	DAE10119NMN	COACHLINE, double, car set, White Diamond	1	Up to 1999.
	DAE10119NXX	COACHLINE, double, car set, Old English White	1	1999 on.
	DAE10119PMA	COACHLINE, double, car set, Black	1	
30	DAF10380NMN	DECAL, body side and boot lid, 'Mini Cooper', White Diamond	3/2	Quantity reduces from late 1991 on (fuel injected models); up to 1999.
	DAF10380NXX	DECAL, body side 'Mini Cooper', Old English White	2	1999 on.
	DAF10380PMA	DECAL, body side and boot lid, 'Mini Cooper', Black	3/2	Quantity reduces from late 1991 on (fuel injected models).
31	DAF10402/3NMN	BONNET STRIPES, pair, White Diamond	1	Up to 1999.
	DAF10402/3NXX	BONNET STRIPES, pair, Old English White	1	1999 on.
	DAF10402/3PMA	BONNET STRIPES, pair, Black	1	
	DAF10402/3CH	BONNET STRIPES, pair, White chequers	1	
	DAF10402/3CQU	BONNET STRIPES, pair, Black chequers	1	

Body Decals and Stripes - Limited Editions



Body Decals and Stripes - Limited Editions

No.	Part No.	Description	Qty.	Remarks
-----	----------	-------------	------	---------

Limited Editions

Ok, we admit partial defeat here. It's not too bad catering for decals and stripes for the 'mainstream' models; however a pragmatic stance has to be taken with the limited editions (believed to be some 48 in total, including those that unofficially evolved into mainstream models). In fact, limited edition Minis probably outnumbered the limited editions available on any other motor car, at any time! If Somerford Mini Limited attempted to cater for all of the factory-applied stripes and decals applied to these limited editions, the result would undoubtedly be financially suicidal. As a result, the decals and stripes listed here have been chosen because they cover the more widely available limited editions. Even so, a decal or stripe listed in this section cannot be assumed to be available - please contact us for current availability for your model.

Models not acknowledged here include the Mini Special (LHD markets, pre-1980 version), Mini Bridgitte and Mini Masters (Germany), Mini Printemps Mini Twinings, Mini After Eight and Mini Woodbury (France), Mini Disco (Denmark), Mini Ebony (Netherlands), Mini Checkers and Mini Mayfair II (Japan). If you have one of the models not included in this section, please don't despair quite yet - if you contact us, giving as much detail and information as possible, it may just be that we can source the decal or stripe you are after, somehow.

Striping kits are available as car sets only, due to the problems in matching colours with those that have weathered over the years on a car. Coachlines are usually also sold in car sets; where this is not the case, it will state clearly in the text.

Special, RHD Models 1979

1	SSKGR	STRIPE KIT, car set, Rose and Brown	1	
	SSKRS	STRIPE KIT, car set, Silver and Black	1	

Sprite 1983

2	JRC6234/9LP	STRIPE KIT, car set, 'Sprite', Nimbus Grey	1	
---	-------------	--	---	--

25th Anniversary 1984

3	25KIT	STRIPE KIT, car set, 'Mini 25', Nimbus Grey and Red	1	
---	-------	---	---	--

Ritz 1985

4	RITZKIT	STRIPE KIT, car set, 'Ritz', Red	1	
---	---------	----------------------------------	---	--

The Chelsea 1986

5	JPC2934/40	STRIPE KIT, car set, 'The Chelsea', Silver and Red	1	
---	------------	--	---	--

Piccadilly 1986

6	JPC6652/9	STRIPE KIT, car set, 'Piccadilly', Saddle	1	
---	-----------	---	---	--

Park Lane 1987

7	JPC6960/2RX	STRIPE KIT, car set, 'Park Lane', Silver	1	
---	-------------	--	---	--

Advantage 1987

8	JPC8477/9	STRIPE KIT, car set, 'Advantage', Grey and Green	1	
---	-----------	--	---	--

Jet Black 1988

9	DAE10091CNR	COACHLINE, single, body side, car set, Red	1	
	KPC1830	COACHLINE, single, back panel, Black	1	
10	KPC1829	DECAL, body side, 'Jet Black', Red	2	
11	KPC1828	DECAL, boot lid, 'Jet Black', Red	1	

Red Hot 1988

12	KPC1836	COACHLINE, single, body side, Black	A/R	Sold per metre.
	KPC1835	COACHLINE, single, back panel, Black	1	
13	KPC1834	DECAL, body side, 'Red Hot', Black	2	
14	KPC1833	DECAL, boot lid, 'Red Hot', Black	1	

Designer 1988

15	DAE10117PMA	COACHLINE, double, car set, Black	1	
	DAE10117NMX	COACHLINE, double, car set, Pearl White	1	
16	DAF10169PMA	DECAL, body side, 'Designer', Black	2	
	DAF10169NMX	DECAL, body side, 'Designer', Pearl White	2	
17	DAF10168PMA	DECAL, boot lid, 'Designer', Black	1	
	DAF10168NMX	DECAL, boot lid, 'Designer', Pearl White	1	

Sky Blue 1989

18	DAE10119RWX	COACHLINE, double, car set, Grey and Sky Blue	1	
19	DAF10154RWX	DECAL, body side, 'Sky', Grey and Sky Blue	2	

No.	Part No.	Description	Qty.	Remarks
-----	----------	-------------	------	---------

20	DAF10155RWX	DECAL, boot lid, 'Sky', Grey and Sky Blue	1	
----	-------------	---	---	--

Rose Pink 1989

21	DAE10119RWW	COACHLINE, double, car set, Grey and Rose Pink	1	
22	DAF10157RWW	DECAL, body side, 'Rose', Grey and Rose Pink	2	
23	DAF10158RWW	DECAL, boot lid, 'Rose', Grey and Rose Pink	1	

Racing Green 1989 and 1990

24	DAE10120RWY	COACHLINE, double, car set, White and Gold	1	
25	DAF10239RWY	DECAL, body side, 'Racing Green', White and Gold	2	
26	DAF10240RWY	DECAL, boot lid, 'Racing Green', White and Gold	1	

Flame Red 1989 and 1990

27	DAE10120RWY	COACHLINE, double, car set, White and Gold	1	
28	DAF10237RWY	DECAL, body side, 'Flame Red', White and Gold	1	
29	DAF10238RWY	DECAL, boot lid, 'Flame Red', White and Gold	1	

30th Anniversary 1989

30	DAE10036RXX	COACHLINE, double, car set, Gold and Black	1	
	DAE10036RYV	COACHLINE, double, car set, Gold and Claret	1	
31	DAF10234RXX	DECAL, body side, RH, '1959 - 1989', Gold and Black	1	
	DAF10234RYV	DECAL, body side, RH, '1959 - 1989', Gold and Claret	1	
	DAF10235RXX	DECAL, body side, LH, '1959 - 1989', Gold and Black	1	
	DAF10235RYV	DECAL, body side, LH, '1959 - 1989', Gold and Claret	1	
32	DAF10236RXX	DECAL, boot lid, 'Thirty', Gold and Black	1	
	DAF10236RYV	DECAL, boot lid, 'Thirty', Gold and Claret	1	

Cooper SE (Rover Special Products) 1990

33	DAE10119NMN	COACHLINE, double, car set, White Diamond	1	
34	DAF10380NMN	DECAL, body side and boot lid, 'Mini Cooper', White Diamond	3	
35	DAF10402/3NMN	BONNET STRIPES pair, White Diamond	1	
36	DAF10385PMA	DECAL, bonnet, 'John Cooper' signature, Black	1	Original Cooper SE decal, for white bonnet stripes.
	DAF10385NMN	DECAL, bonnet, 'John Cooper' signature, White	1	Replica decal, for later Coopers with black bonnet stripes.

Checkmate 1990

37	DAE10119RZD	COACHLINE, double, car set, White and Silver	1	
38	DAF10335RZD	DECAL, body side, 'Checkmate', White and Silver	2	
39	DAF10336RZD	DECAL, boot lid, 'Checkmate', White and Silver	1	

Studio 2 1990

40	DAE10026HNM	COACHLINE, single, door and body side, Jade	2	1 required per side.
41	DAF10331RUA	DECAL, lower door, 'Studio 2', Jade and Silver	2	
42	DAF10332RUA	DECAL, boot lid, 'Studio 2', Jade and Silver	1	

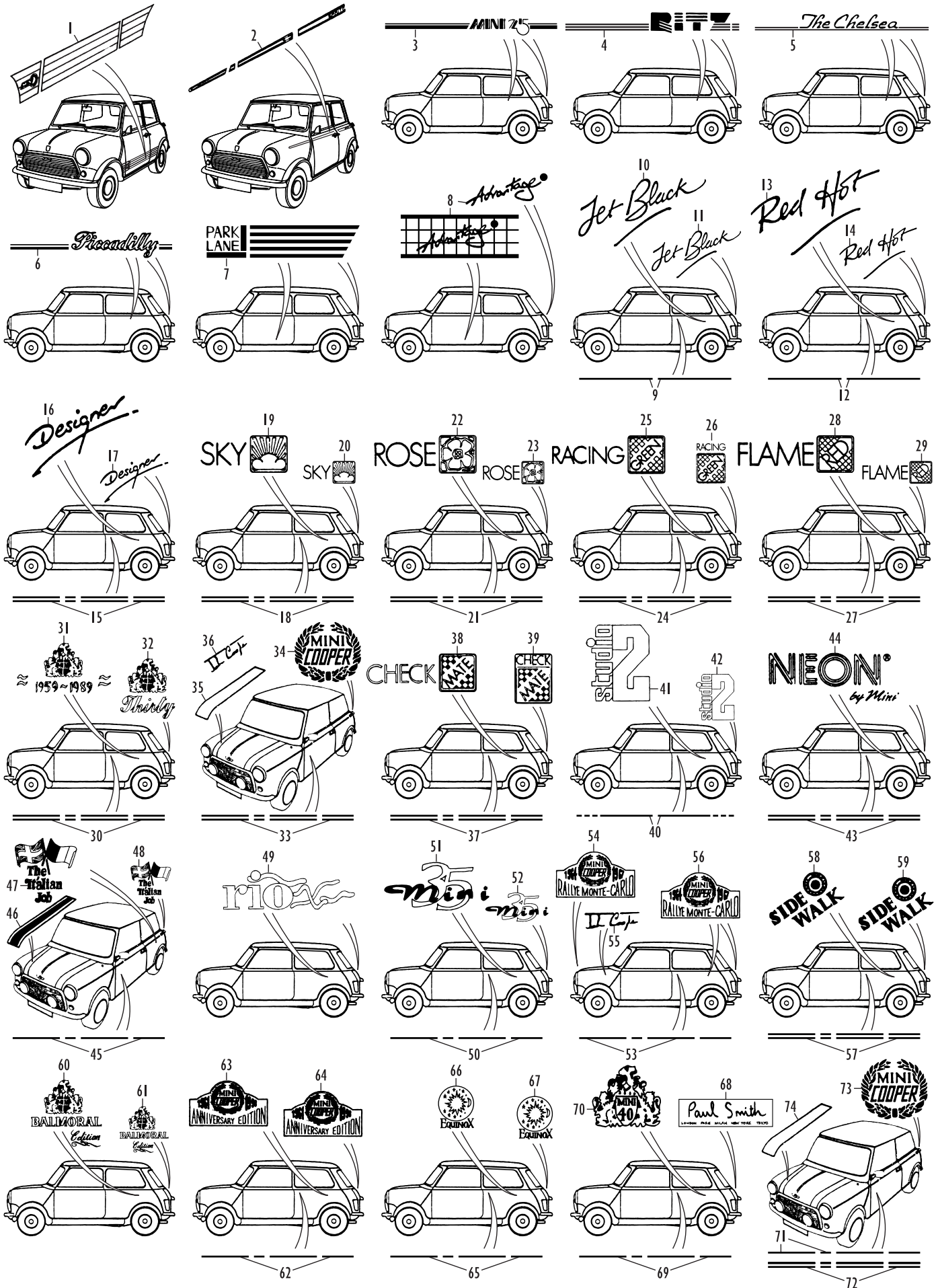
Neon 1991

43	DAE10123RFL	COACHLINE, double, car set, Pink and Silver	1	
44	DAF10388RFL	DECAL, body side and boot lid, 'Neon', Pink and Silver	3	

Italian Job 1992

45	JRC2679NMN	COACHLINE, single, car set, White	1	
	DAE10081LMP	COACHLINE, single, car set, Nimbus Grey	1	Use on White Diamond coloured cars.
46	DAF104120/30RDP	BONNET STRIPES, pair, Black with White edges	1	
47	DAF104160RHS	DECAL, body side, 'Italian Job'	2	
	DAF104160RHR	DECAL, body side, 'Italian Job'	2	Use on White Diamond coloured cars.
48	DAF104090RHS	DECAL, boot lid, 'Italian Job'	1	
	DAF104090RHR	DECAL, boot lid, 'Italian Job'	1	Use on White Diamond coloured cars.

Body Decals and Stripes - Limited Editions



Body Decals and Stripes - Limited Editions

No.	Part No.	Description	Qty.	Remarks
-----	----------	-------------	------	---------

Limited Editions (continued)

The Caribbean, Nightfire, Tahiti and Polynesian limited editions were in reality little more than Mini Sprites made available specially in either brand new Rover metallic or pearlescent colours, or in colours not previously available on the Mini range. None were produced in very significant numbers.

Caribbean 1993

	DAF104210UME	DECAL, body side, 'Caribbean'	2	
	DAF104300UME	DECAL, boot lid, 'Caribbean'	1	

Nightfire 1993

	DAF104310COQ	DECAL, body side, 'Nightfire'	2	
	DAF104320COQ	DECAL, boot lid, 'Nightfire'	1	

Tahiti 1993

	DAF104400RAP	DECAL, body side, 'Tahiti', Red and Yellow	2	
	DAF104410RAP	DECAL, boot lid, 'Tahiti', Red and Yellow	1	

Polynesian 1993

	DAF104500UME	DECAL, body side, 'Polynesian'	2	
	DAF104510UME	DECAL, boot lid, 'Polynesian'	1	

Rio 1993

49	DAF104440RAM	DECAL, body side, 'Rio', RH, Silver, Yellow, Blue and Pink	1	
	DAF104450RAM	DECAL, body side, 'Rio', LH, Silver, Yellow, Blue and Pink	1	
	DAF104460RAM	DECAL, boot lid, 'Rio', Silver, Yellow, Blue and Pink	1	

Cosmopolitan 1993

	DAF104380RCG	DECAL, body side, 'Cosmopolitan'	2	
	DAF104370RCG	DECAL, boot lid, 'Cosmopolitan'	1	

35th Anniversary 1994

50	DAE10081MMG	COACHLINE, single, car set, Silver	1	
51	DAF104900RCY	DECAL, body side, '35', Silver, Nimbus Grey and Pink	2	
	DAF104900RBK	DECAL, body side, '35', Gold and Charcoal	2	
52	DAF104660RCY	DECAL, boot lid, '35', Silver, Nimbus Grey and Pink	1	
	DAF104660RBK	DECAL, boot lid, '35', Gold and Charcoal	1	

Monte Carlo 1994

53	JRC2679NAL	COACHLINE, single, car set, White	1	
54	DAF104540RAU	DECAL, bonnet, 'Rallye Monte Carlo', White and Red	1	
55	DAF104670NAL	DECAL, front wing, 'John Cooper' signature, White	2	
56	DAF104530RAU	DECAL, body side, 'Rallye Monte Carlo', White and Red	2	
	DAF104520RAU	DECAL, boot lid, 'Rallye Monte Carlo', White and Red	1	

Sidewalk 1995

57	DAE102080RPQ	COACHLINE, double, car set, Blue and Red	1	
58	DAF105000RNF	DECAL, body side, 'Sidewalk', Blue, Silver and Red	2	
59	DAF104980RNF	DECAL, boot lid, 'Sidewalk', Blue, Silver and Red	1	

Balmoral 1995

60	DAF105020RHE	DECAL, body side, 'Balmoral', Gold and Green	2	
	DAF105020RBK	DECAL, body side, 'Balmoral', Gold and Charcoal	2	
61	DAF104990RHE	DECAL, boot lid, 'Balmoral', Gold and Green	1	
	DAF104990RBK	DECAL, boot lid, 'Balmoral', Gold and Charcoal	1	

Tartan 1995

	DAF105040RBG	DECAL, body side, 'Tartan', Gold, Red, Green and Black	2	
--	--------------	--	---	--

No.	Part No.	Description	Qty.	Remarks
-----	----------	-------------	------	---------

	DAF105060RBG	DECAL, boot lid, 'Tartan', Gold, Red, Green and Black	1	
--	--------------	---	---	--

Silverstone 1996

	DAE101590	COACHLINE, special, body side, Silver	2	1 required per side.
	DAF104390	DECAL, body side, 'Silverstone'	2	

Cooper 35 1996

62	DAE10081NMN	COACHLINE, single, car set, White Diamond	1	
63	DAE102220NMN	DECAL, body side, 'Anniversary Edition', White	2	
	DAE102220RAU	DECAL, body side, 'Anniversary Edition', White and Red	2	
64	DAE102200NMN	DECAL, boot lid, 'Anniversary Edition', White	1	
	DAE102200RAU	DECAL, boot lid, 'Anniversary Edition', White and Red	1	

Equinox 1996

65	DAE10081GME	COACHLINE, single, car set, Gold	1	
66	DAE102170RKN	DECAL, body side, 'Equinox', Amaranth Purple and Gold	2	
	DAE102170RBK	DECAL, body side, 'Equinox', Gold and Charcoal	2	
	DAE102170RBL	DECAL, body side, 'Equinox', Platinum and Purple	2	
67	DAE102130RKN	DECAL, boot lid, 'Equinox', Amaranth Purple and Gold	2	
	DAE102130RBK	DECAL, boot lid, 'Equinox', Gold and Charcoal	2	
	DAE102130RBL	DECAL, boot lid, 'Equinox', Platinum and Purple	2	

Paul Smith 1998

68	DAF105180NMN	DECAL, rear window, 'Paul Smith', White	1	
----	--------------	---	---	--

40th Anniversary 1999

69	DAE102320GME	COACHLINE, single, car set, Gold	1	
70	DAF105410GME	DECAL, body side, 'Mini 40', Gold	2	

Classic 2000 Models

The Classic 2000 models could really be thought of as either mainstream models or limited editions. They were in fact 'runout' models, introduced in April 2000 as a new range of four Minis to see out the last six months of production and replacing all previously available models. The last 500 Classic 2000 Minis thus became the last Minis built, and received fascia plaques to mark the fact. All Classic 2000 models were to UK and Europe MPI (multi-point injection) specification; production of the Japanese TBI (throttle body injection) Minis had ceased in 1999 - there had been a further 3000 Minis intended for the Japanese market, but these were cancelled at rather short notice.

The Seven was the albeit rather upmarket baseline model in the Classic 2000 range, a pastiche of the original 1959 Minis with a light sprinkling of luxury equipment. Old English White versions received white wheels to match. The Knightsbridge, a Sports Pack equipped luxury model, was intended for mainland European sales only. The Cooper remained relatively unchanged from the previous couple of years' Mini Coopers, the interior trim getting a light makeover. The Cooper Sport sat at the top of the range with a heady blend of sports and luxury equipment, including distinctive (some would say strange) Nickel silver leather, and naturally Sports Pack suspension and wheels. Cooper Sports were the last Minis of all to be built.

Seven and Knightsbridge 2000

71	DAE102230GME	COACHLINE, single, car set, Gold	1	
	DAE102230NMN	COACHLINE, single, car set, White Diamond	1	
	DAE102230NNX	COACHLINE, single, car set, Old English White	1	
	DAE102230MMG	COACHLINE, single car set, Silver	1	

Cooper and Cooper Sport 2000

72	DAE10119NNX	COACHLINE, double, car set, Old English White	1	
	DAE10119MNX	COACHLINE, double, car set, Silver	1	
73	DAF10380NNX	DECAL, body side, 'Mini Cooper', Old English White	2	
	DAF10380MNX	DECAL, body side, 'Mini Cooper', Silver	2	
74	DAF10402/3MNX	BONNET STRIPES, pair, Old English White	1	
	DAF10402/3MNX	BONNET STRIPES, pair, Silver	1	

Brief Mini Production History

This list is intended to assist some owners who are trying to establish year and model of their Mini. However, while the list may seem comprehensive, it isn't. Just like everything else to do with the Mini when you look at its 40 year history, to come up with every last derivative complete with corresponding chassis number (or vehicle identification number) prefix, would take several pages! However, limited editions excepted, it details the Mini models covered by this catalogue and is a fair representation of models down through the years.

It does not cover models specific to certain markets that were locally assembled (e.g. Innocenti, Authi, Cord and Belgium, South Africa and Australia assembled vehicles). It also does not include certain short-lived niche models like the ERA Mini Turbo.

Note that earlier Mk1 export models were often badged '850' rather than 'Mini' or 'Seven', and that the later 1980s/1990s City models were usually known in Europe as Special and in Japan as Sprite.

Model	Years Built	Chassis No./VIN Prefix	Commencing Chassis No./VIN
-------	-------------	------------------------	----------------------------

Austin and Morris Mk I Saloons 1959-67

Austin Seven (850)	1959-62	A-A2S7	101
Austin Mini (850)	1962-67	A-A2S7	197201
Austin Seven De Luxe (850)	1959-62	A-A2S7	101
Austin Mini De Luxe (850)	1962	A-A2S7	197021
Austin Super Seven (850)	1961-62	A-A2S7S	125538
Austin Super Mini (850)	1962	A-A2S7S	197021
Austin Mini Super De Luxe (850)	1962-64	A-A2S7S	307125
Austin Mini De Luxe (850)	1964-67	A-A2S7	640203
Austin Seven/Mini Cooper (997)	1961-64	C-A2S7	138301
Austin Mini Cooper (998)	1963-67	C-A2S7	486096
Austin Mini Cooper S (1071)	1963-64	C-A2S7	384101
Austin Mini Cooper S (1275)	1964-67	C-A2S7	551501
Austin Mini Cooper S (970)	1964-65	C-A2S7	549501
Morris Mini Minor (850)	1959-67	M-A2S4	101
Morris Mini Minor De Luxe (850)	1959-62	M-A2S4	101
Morris Super Mini Minor (850)	1961-62	M-A2S4S	75573
Morris Mini Minor Super De Luxe (850)	1962-64	M-A2S4S	148817
Morris Mini Minor De Luxe (850)	1964-67	M-A2S4	296257
Morris Mini Cooper (997)	1961-64	K-A2S4	138311
Morris Mini Cooper (998)	1963-67	K-A2S4	491251
Morris Mini Cooper S (1071)	1963-64	K-A2S4	384101
Morris Mini Cooper S (1275)	1964-67	K-A2S4	552501
Morris Mini Cooper S (970)	1964-65	K-A2S4	550501

Austin and Morris Mk II Saloons 1967-70

Austin Mini Mk II 850	1967-69	A-A2SB	1068001
Austin Mini Mk II 850 Super De Luxe	1967-69	A-A2SB	1068001
Austin Mini Mk II 1000 Super De Luxe	1967-69	A-A2SB	1068001
Austin Mini Cooper Mk II (998)	1967-69	C-A2SB	1068151
Austin Mini Cooper S Mk II (1275)	1967-70	C-A2SB	1068451
Morris Mini Mk II 850	1967-69	M-A2S6	507001
Morris Mini Mk II 850 Super De Luxe	1967-69	M-A2S6	507001
Morris Mini Mk II 1000 Super De Luxe	1967-69	M-A2S6	507001
Morris Mini Cooper Mk II (998)	1967-69	K-A2S6	1068197
Morris Mini Cooper S Mk II (1275)	1967-70	K-A2S6	1068471

Mini Mk III Saloons 1969-75

Mini 850	1969-74	X-A2S1	101
Mini 850	1974-75	X-K2S1	101
Mini 1000	1969-74	X-A2S1N	101
Mini 1000	1974-75	X-L2S1N	101
Mini Cooper S Mk III (1275)	1970-71	X-AD1	101

Mini Saloons 1976-96 ('Mk IV' and Throttle Body Injection or TBI)

Mini 850	1976-79	X-K2S1	340101
Mini City (850)	1979-80	X-K2S1	633177
Mini 850 Super De Luxe	1979-80	X-K2S1N	635039
Mini 1000	1976-79	X-L2S1N	340554
Mini 1000 Super	1979-80	X-L2S1N	633285
Mini City (1000)	1980-82	X-L2S1O	743114
Mini City E (1000)	1982-88	X-L2S1O	122249
Mini City (1000) Non Catalyst	1988-92	X-L2S1O	396449
Mini City (1000) Catalyst	1989-92	X-L2S3O	426565
Mini HL (1000)	1980-82	X-L2S1N	743004
Mini HLE (1000)	1982	X-L2S1N	122249
Mini Mayfair (1000)	1982-88	X-L2S1N	147144
Mini Mayfair (1000) Non Catalyst	1988-92	X-L2S1N	396449
Mini Mayfair (1000) Catalyst	1989-92	X-L2S3N	426565

Model	Years Built	Chassis No./VIN Prefix	Commencing Chassis No./VIN
Mini Mayfair (1000) Europe Non Catalyst	1988-92	X-L2S1S	396449
Mini Mayfair (1000) Europe Catalyst	1989-92	X-L2S3S	426565
Mini Sprite (1275)	1992-94	XN-VA	049349
Mini Sprite 1.3i (1275)	1994-96	XN-VA	058254
Mini Mayfair (1275)	1992-94	XN-WA	049349
Mini Mayfair 1.3i (1275)	1994-96	XN-WA	058254
Mini Cooper (1275) RSP Limited Edition	1990	XN-CA	010001
Mini Cooper (1275)	1990-91	XN-CA	011651
Mini Cooper 1.3i (1275)	1991-96	XN-CA	031550

Mini Saloons 1997 On (Multi Point Injection or MPI, plus TBI)

Mini (1275) MPi	1997-2000	XN-WA	134455
Mini (1275) TBI Japan	1997-1999	XN-WA	134455
Mini Cooper (1275) MPi	1997-2000	XN-CA	134455
Mini Cooper (1275) TBI Japan	1997-1999	XN-CA	134455

Riley and Wolseley Saloons 1961-69

Riley Elf (850)	1961-63	R-A2S1	156851
Riley Elf Mk II (1000)	1963-66	R-A2S2	369601
Riley Elf Mk III (1000)	1966-69	R-A2S3	930221
Wolseley Hor net (850)	1961-63	W-A2S1	156861
Wolseley Hor net Mk II (1000)	1963-66	W-A2S2	367151
Wolseley Hor net Mk III (1000)	1966-69	W-A2S3	927473

Mini Clubman Saloons 1969-80

Mini Clubman (1000)	1969-74	X-A2S2	101
Mini Clubman (1000)	1974-75	X-L2S2	101
Mini Clubman (1100)	1975-80	X-C2S2	258877
Mini Clubman (1000 Automatic)	1975-80	X-L2S2	258877
Mini 1275 GT	1969-74	X-AD2	101
Mini 1275 GT	1974-80	X-E2D2	101

Mini Cabriolets 1991-96

Mini Cabriolet (Lamm Design)	1991-93	XN-WB	024857
Mini Cabriolet (Rover)	1993-96	XN-WB	061481

Austin and Morris Mk I Estates 1960-67

Austin Seven Countryman (850)	1960-62	A-AW7	19126
Austin Mini Countryman (850)	1962-67	A-AW7	197104
Morris Mini Minor Traveller (850)	1960-67	M-AW4	19101

Austin and Morris Mk II Estates 1967-69

Austin Mini Countryman Mk II 1000	1967-69	A-AWB	1068101
Morris Mini Traveller Mk II 1000	1967-69	M-AW6	1068401

Mini Clubman and HL Estates 1969-82

Mini Clubman Estate (1000)	1969-74	X-A2W2	101
Mini Clubman Estate (1000)	1974-75	X-L2W2	101
Mini Clubman Estate (1100)	1975-80	X-C2W2	259639
Mini Clubman Estate (1000 Automatic)	1975-80	X-L2W2	259639
Mini HL Estate (1000)	1980-82	X-L2W2	751080

Mini Vans 1960-84

Austin Seven/Mini Van (850)	1960-69	A-AV7	12101
Austin Mini Van (1000)	1967-69	A-AV7	1068001
Morris Mini Van (850)	1960-69	M-AV4	12601
Morris Mini Van (1000)	1967-69	M-AV4	1068001
Mini Van (850 and 1000)	1969-74	X-AV1	101
Mini Van (850)	1974-79	X-KV1	101
Mini Van (1000)	1974-79	X-LV1	101
Mini 95 Van (850)	1979-84	X-KV1	126932
Mini 95 Van (1000)	1979-84	X-LV1	126932

Mini Pick Ups 1961-83

Austin Seven/Mini Pick Up (850)	1961-69	A-AU7	87551
Austin Mini Pick Up (1000)	1967-69	A-AU7	1068001
Morris Mini Pick Up (850)	1961-69	M-AU4	91551
Morris Mini Pick Up (1000)	1967-69	M-AU4	1068001
Mini Pick Up (850 and 1000)	1969-74	X-AU1	101
Mini Pick Up (850)	1974-79	X-KU1	101
Mini Pick Up (1000)	1974-79	X-LU1	101
Mini 95 Pick Up (850)	1979-80	X-KU1	25448
Mini 95 Pick Up (1000)	1979-83	X-LU1	25448